



RG-IDP 5000E

V1.0

7× 24

<http://www.ruijie.com.cn/>

<http://webchat.ruijie.com.cn>

<http://www.ruijie.com.cn/service.aspx>

4008-111-000

<http://support.ruijie.com.cn>

service@ruijie.com.cn



	RG-IDP 5000E
	1.2
	PDF

2023.3.15	V1.0			RG-IDP 5000E PDT

1

1.1 RG-IDP 5000E

	RG-IDP 5000E
--	--------------

2 RG-IDP 5000E

AC 电源
100-240V AC, 50/60Hz, 5.5-3A 冗余电源



2

2.1

RG-IDP 5000E

2.1.1

1~10

" 3.8

3

3.3

10)

11)

12)

13)

3.7

14)

15)

16)

3.8

3.9

SFP+/SFP

XFP/SFP+/SFP

SFP+/SFP

17)

18)

19)

- 1.
- 2. SFP
- 3.
- 4. SFP
SFP

3-7

- 5.
- 6.

SFP+/SFP

SFP+/SFP

SFP+

- | | | | |
|------|---|------|------|
| SFP+ | | SFP+ | SFP+ |
| 20) | | | |
| 21) | | | |
| 22) | | | |
| SFP+ | 0 | | |

26)

27)

SFP+/SFP

SFP+

SFP+

28)

29)

SFP+

8

4

4.1

PC

Console

30)

31)

PC

PC

Windows3.1

Terminal

Windows 95/98/NT/2000/XP

9600

8

1

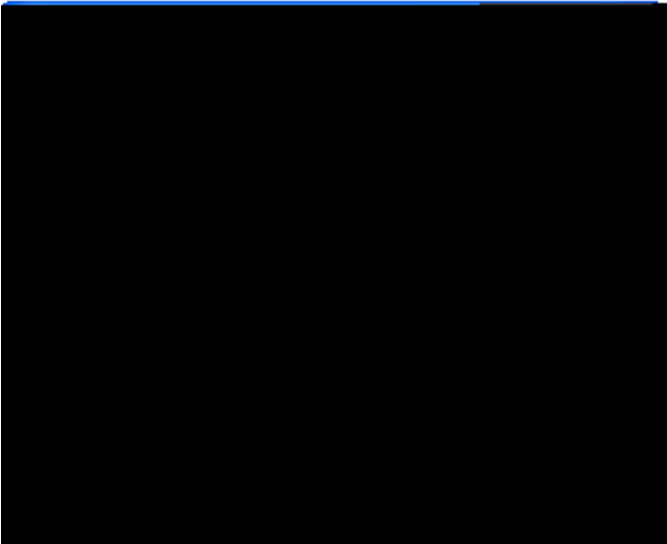
32)

4-1



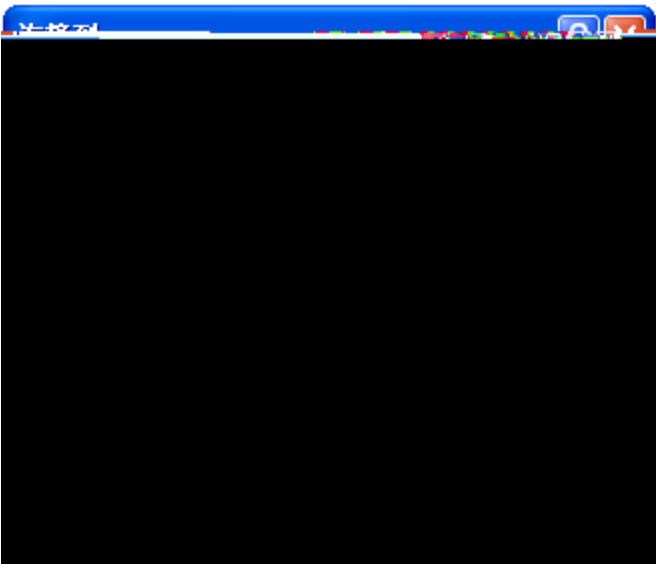
33)

4-2



34)

4-3

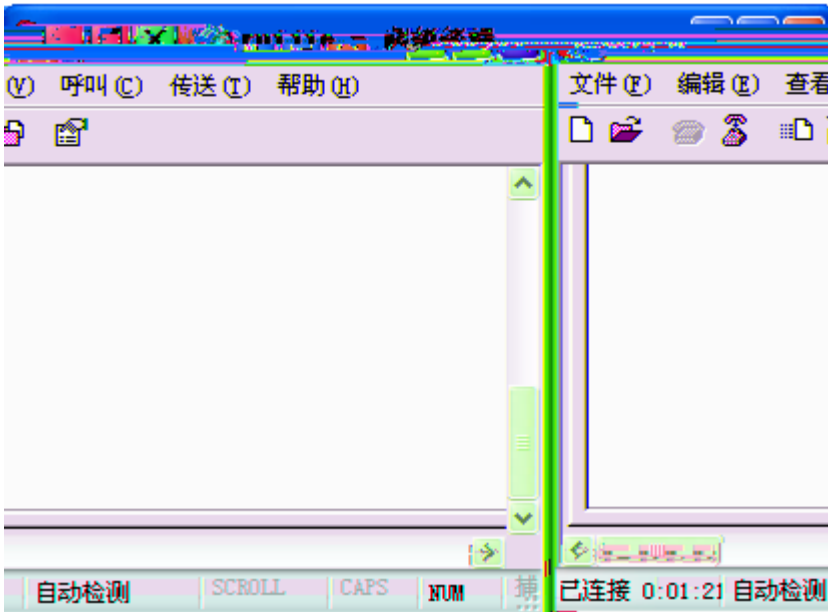


35)

4-4



36)



USB	Console	USB	Console	Console	USB	PC
	PC		"	"	COM	COM
	4-7				LPT	

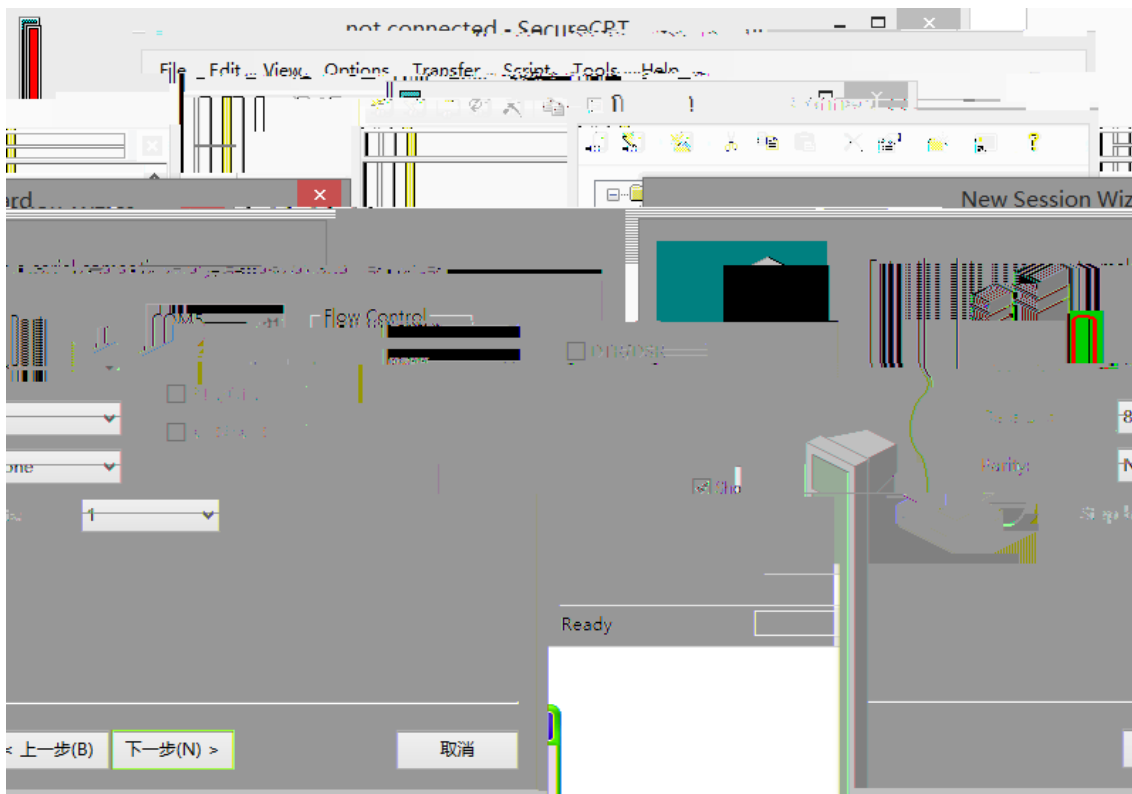
37)

9600

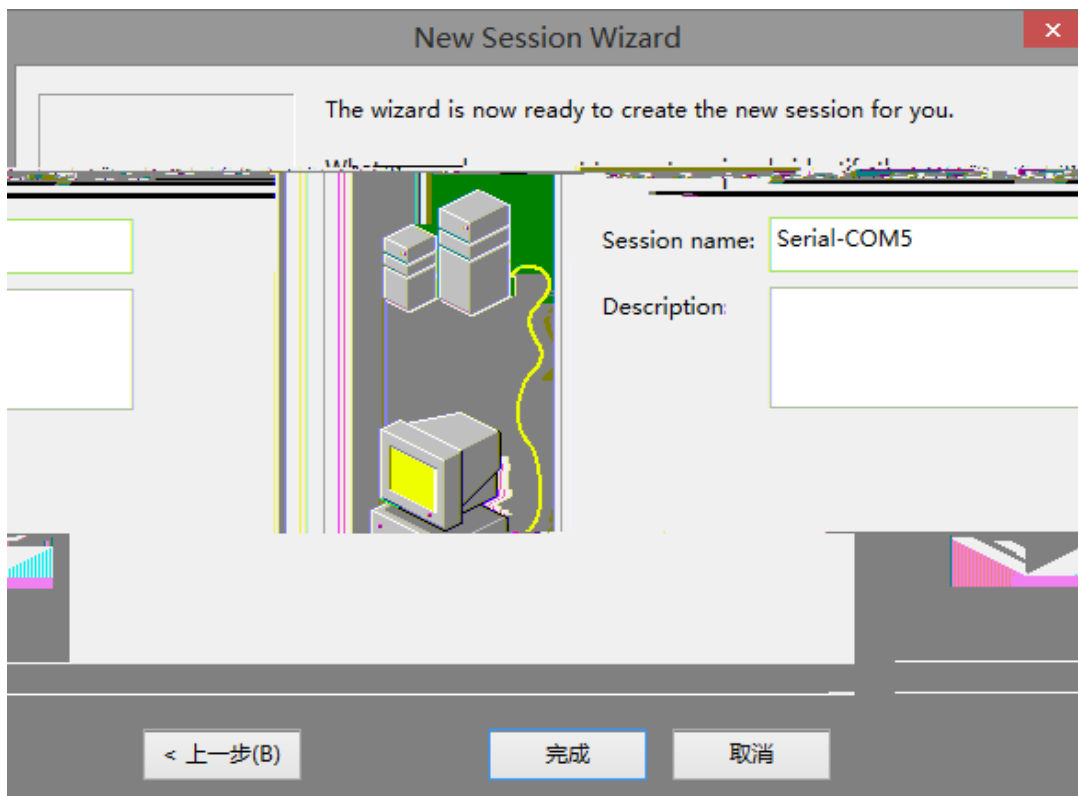
8

1

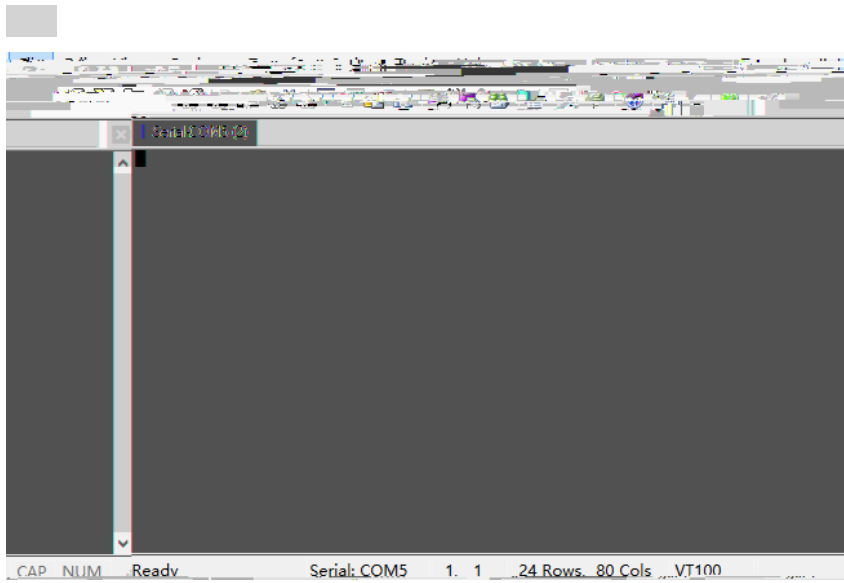
"



4-9



4-10



4-11

4.2

PC

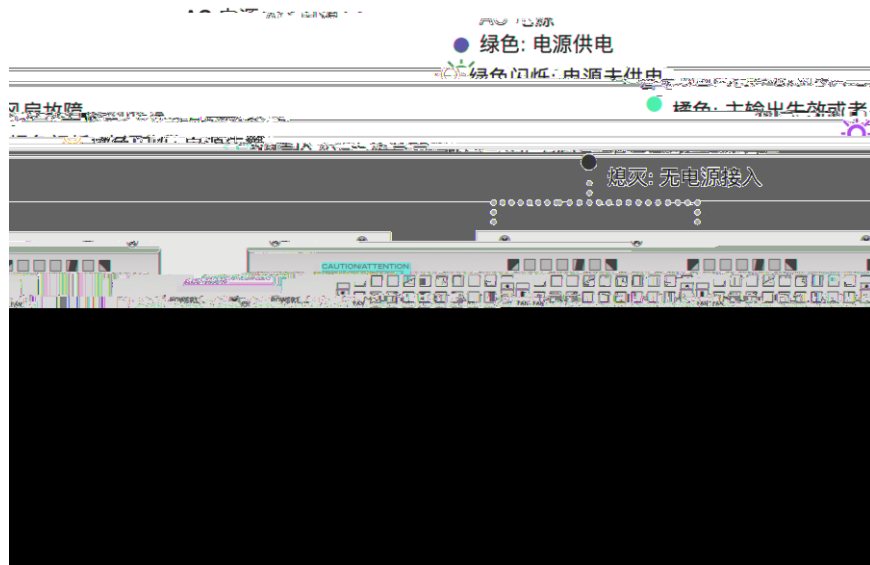
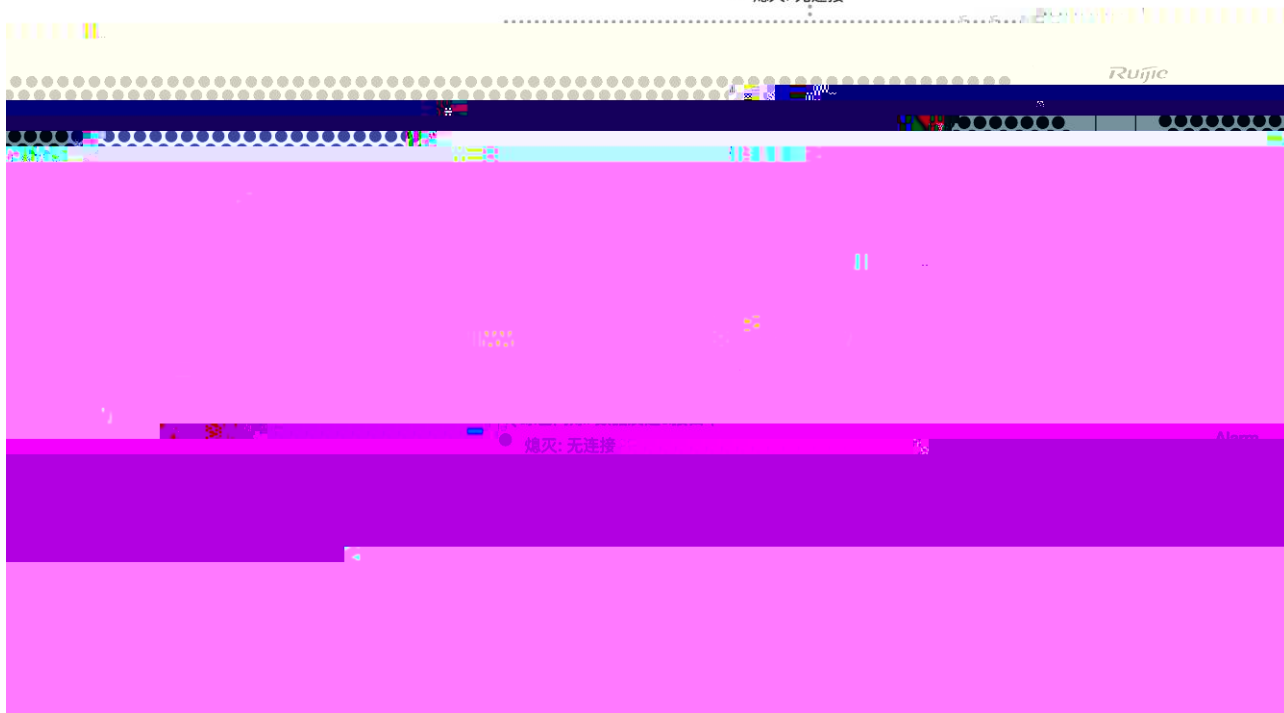
5

5.1

RG-IDP 5000E

5-1 RG-IDP 5000E

- SFP 端口
- 绿色: 已连接
- 绿色闪烁: 数据发送&接口中
- 熄灭: 无连接



RG-IDP 5000E

RG-IDP 5000E

RG-IDP 5000E Internet

Telnet

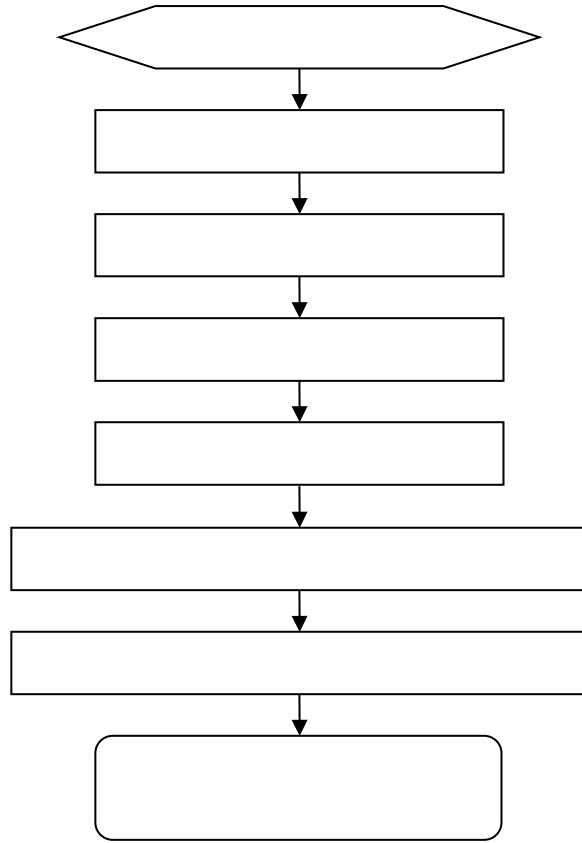
RG-IDP 5000E

RG-IDP 5000E

5.2

6

6.1



6.2

1

2

Status

Power

3

4

A —

1000BASE-T/100BASE-TX/10BASE-T

1000BASE-T/100BASE-TX/10BASE-T

MDI/MDIX Crossover

1000BASE-T IEEE 802.3ab

100-ohm 5

5

UTP

STP

A 4



B

RG-IDP 5000E

19

7

5

7

10

SFP+

5

10

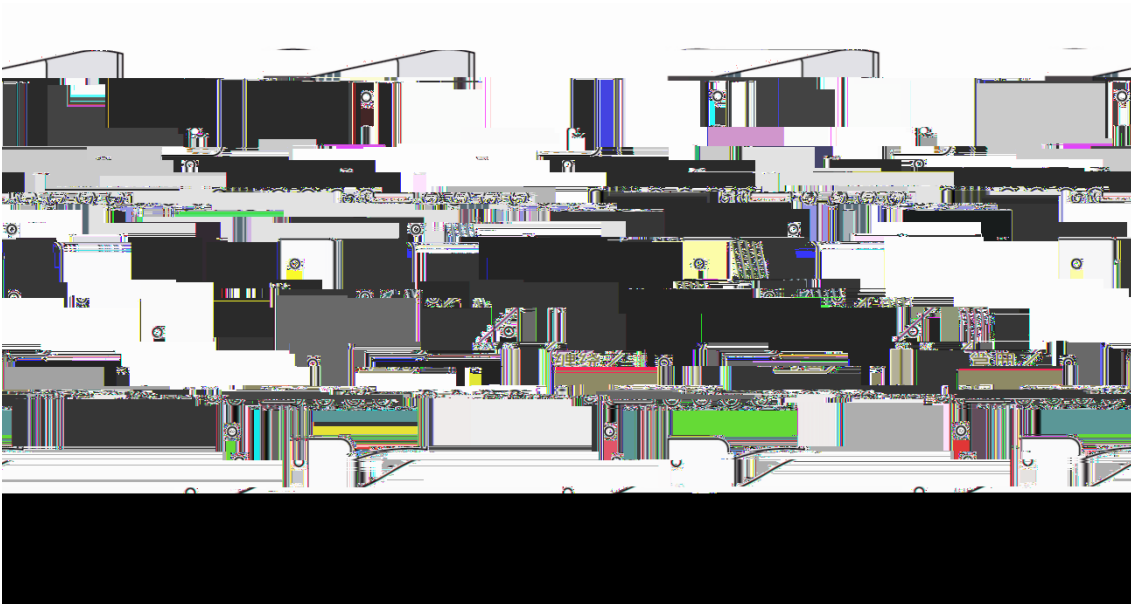
25

20

10

D-1

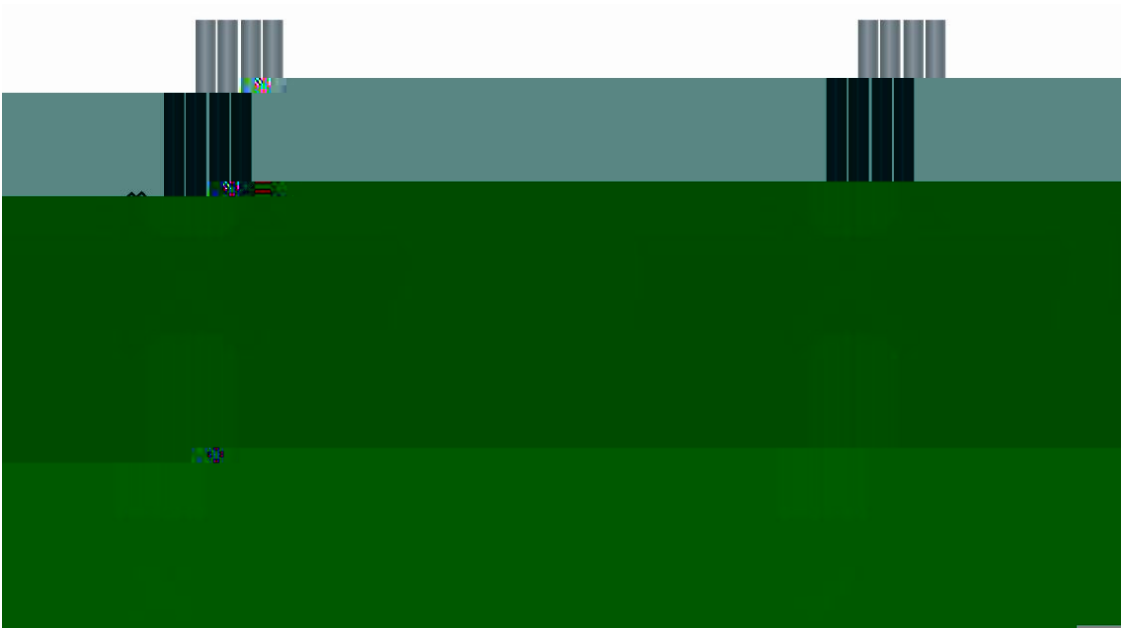
D-1



30mm

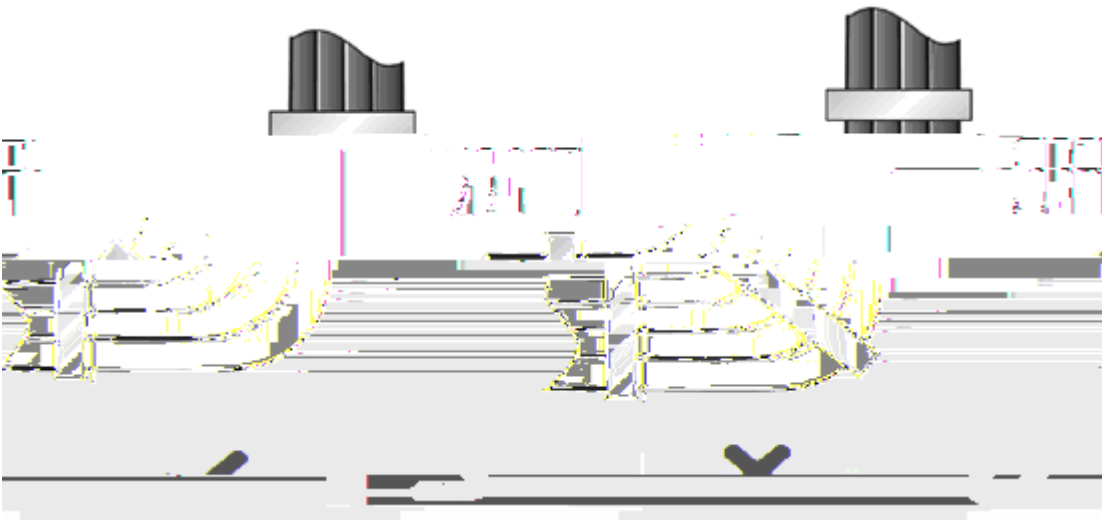
D-2

D-2



D-3

D-3



220V

-48V

D-4

D-4

