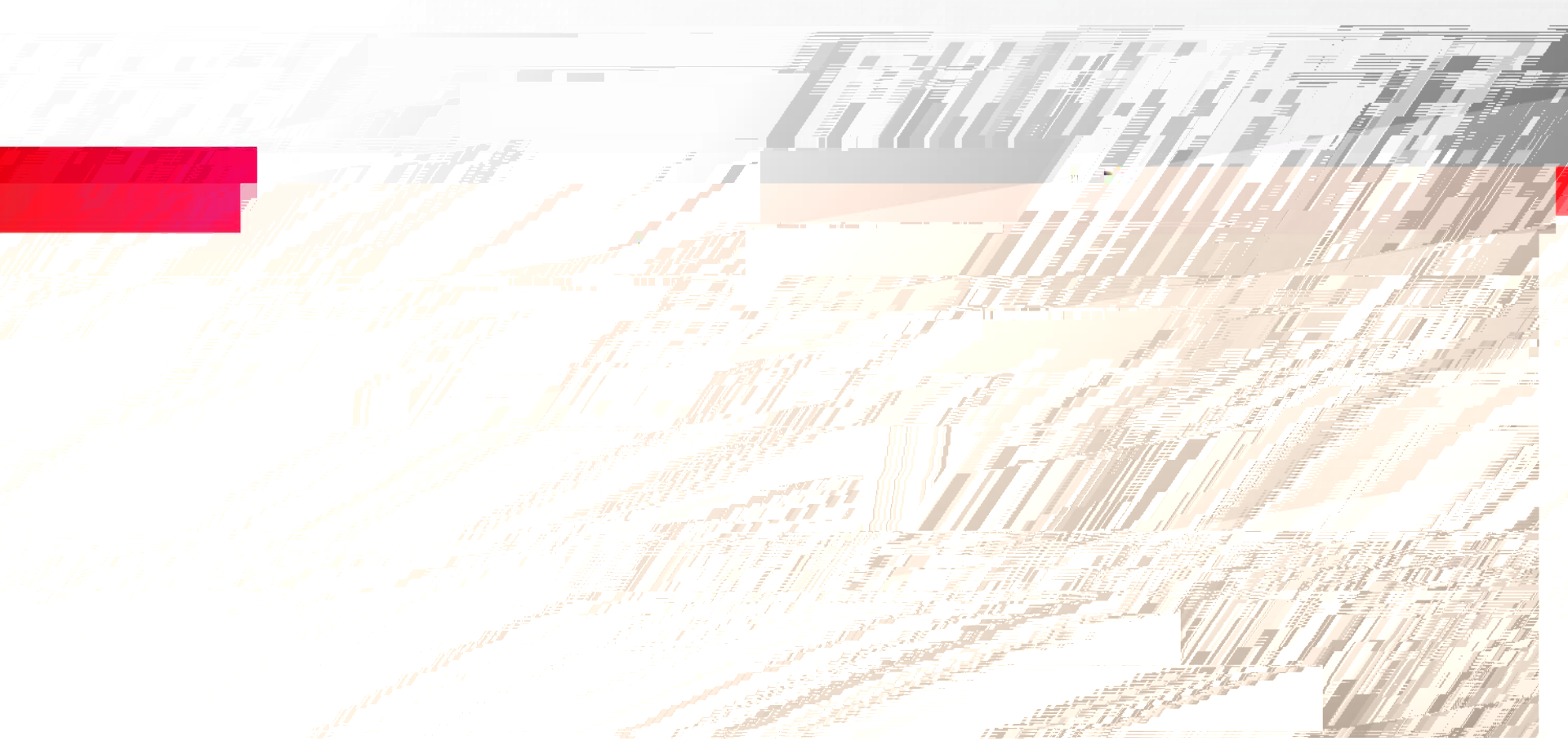


D

|| 锐捷网络



| RG-AP720-I



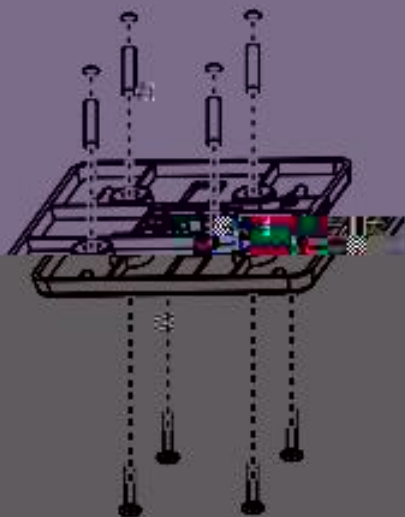
RG-AP720-I

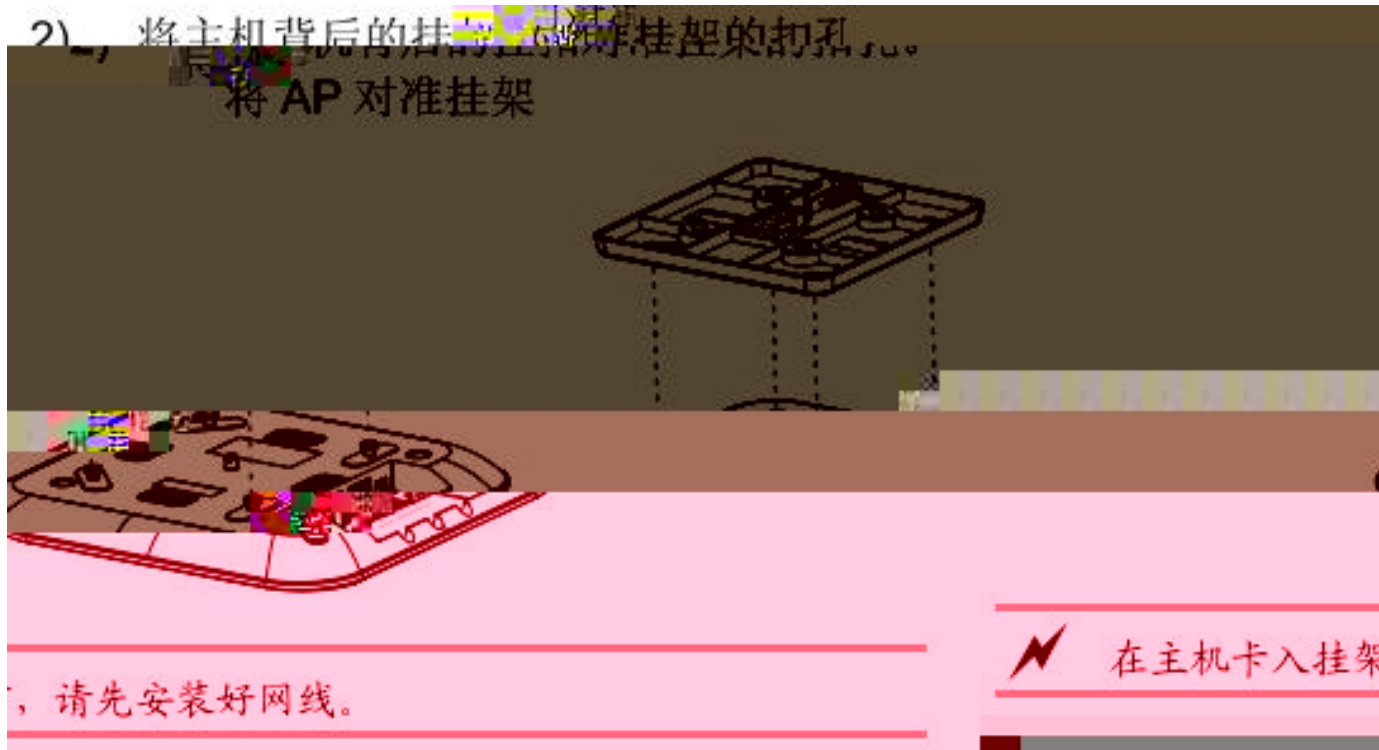
10cm

### ■ 吸顶安装

- 1) 在天花板上钻 4 个直径 6mm 的安装孔，安装孔的中心距离为 53mm。在安装孔中敲入螺丝固定座后，用螺丝将支架固定。

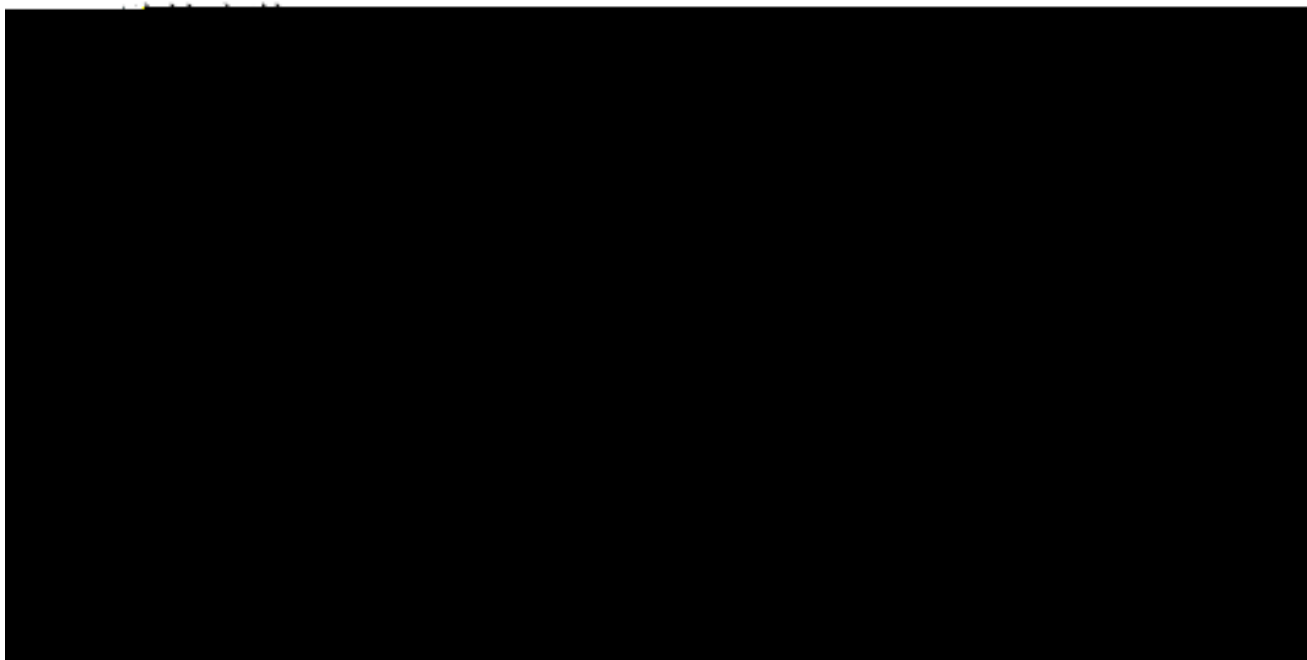
挂架吸顶安装





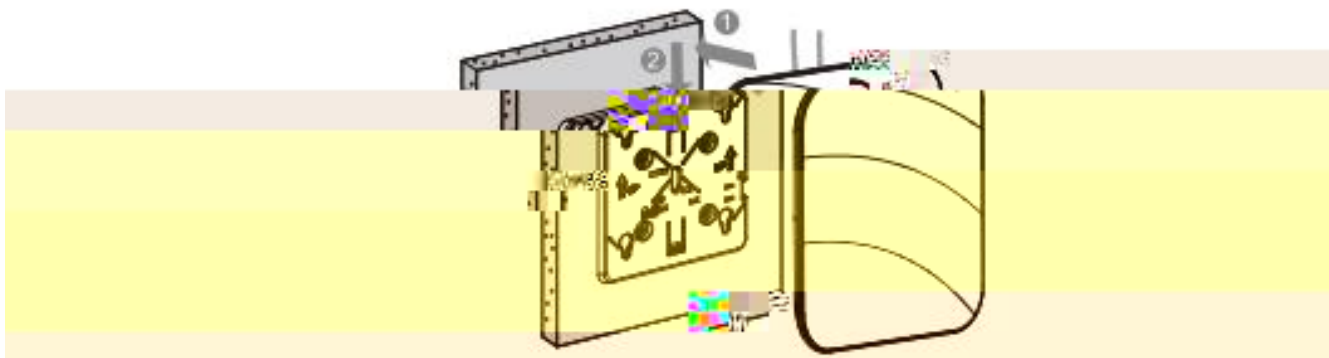
| RG-AP720-I

| RG-AP720-I

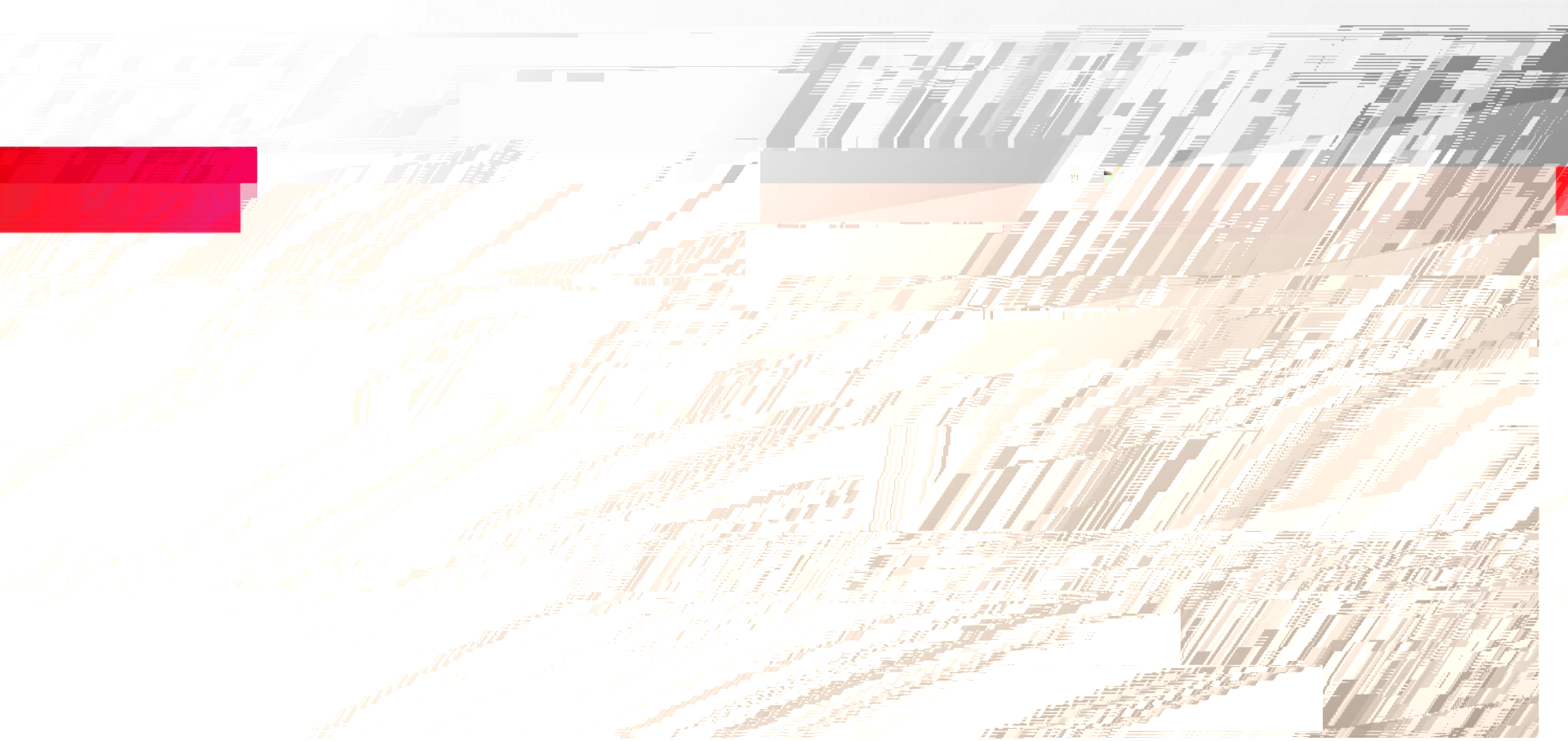




- 3) 沿着挂架上箭头的反方向，将主机挂扣从上往下推入扣孔内扣紧。注意保持正面的“Ruijie” logo 朝上。  
将 AP 扣入挂架









# Console

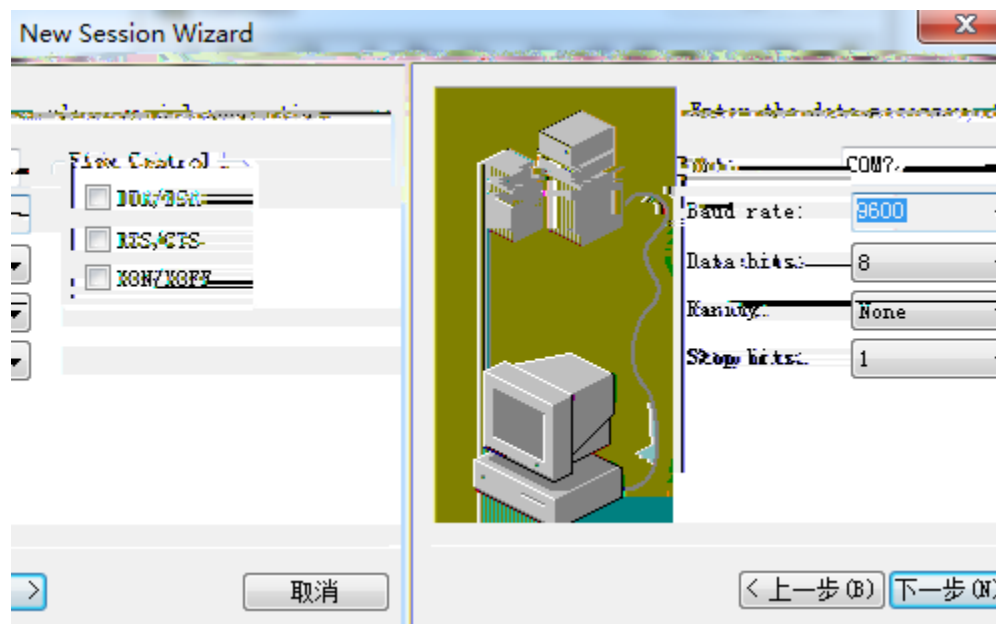
CRT

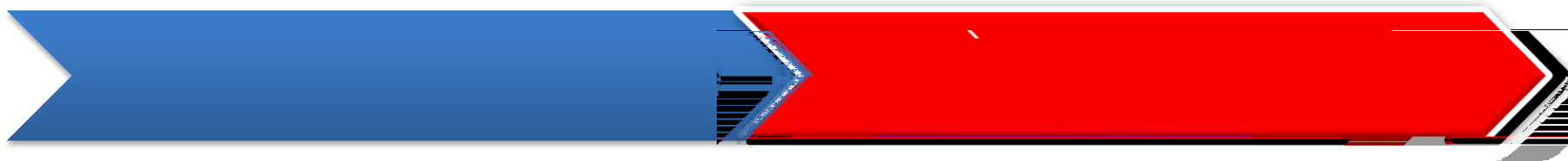
9600/115200

8

1

CRT





telnet

Enab

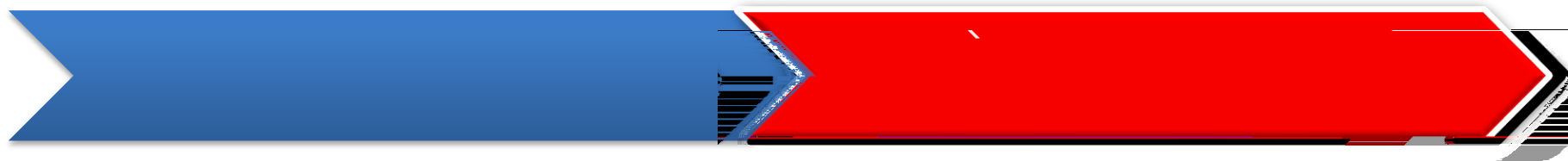
IP



Ruijie(config

Ruijie(config 0 4

Ruijie(config line)v 18( pass)-4(w)9(or)6 )-6(x)5(x)5(x)]TETEM /San AVID 21/Lang (en-SE



## Enable

```
Ruijie(config)# enable password xxx
```

```
( ):
```

```
Ruijie(config-if)# description xxx
```



## IP

```
Ruijie(config)# interface gigabitethernet xxx
```

```
Ruijie(config-if)# no switchport
```

```
Ruijie(config-if)# ip address 192.168.1.1 255.255.255.0
```

```
Ruijie(config-if)# no shutdown
```

```
Ruijie(config-if)# end
```

```
:
```

```
Ruijie(config)# ip route 192.168.1.0 255.255.255.0 10.1.1.1
```

```
192.168.1.0
```

```
10.1.1.1
```

[www.ruijie.com.cn](http://www.ruijie.com.cn)

[www.ruijie.com.cn/service.aspx](http://www.ruijie.com.cn/service.aspx)

[support.ruijie.com.cn](http://support.ruijie.com.cn)

[webchat.ruijie.com.cn](http://webchat.ruijie.com.cn)

4008-111-000