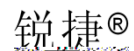
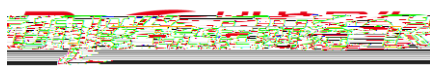




©2013-2021



1

RG-IDP 2500E

IPSec SSL VPN
IPv4 IPv6

NAC SSL

Web

RG-IDP

2500E

RG-IDP 2500E

1.1 RG-IDP 2500E

	RG-IDP 2500E
	0 to 40°C
	-25 to 70°C
	20% 90% RH
	5.6Kg
	254 x 432 x 44 L * W * H mm 1RU
	100-240 VAC, 0 0

2

2.1

RG-IDP 2500E

2.1.1

2.1.2

2.1.3

2.1.4

RG-IDP 2500E

RG-IDP 2500E

2.2.3

RG-IDP 2500E

RG-IDP 2500E

0°C-40°C	20%-90%
----------	---------

1.5M

0.4M

2.2.4

	0.5	1	3	5
/	1.4 x 10	7 x 10	2.4 x 10	1.3 x 10

RG-IDP 2500E

	mg/m ³	mg/m ³
	0.2	1.5
	0.006	0.03
	0.04	0.15
	0.05	0.15
	0.01	0.3

2.2.5

RG-IDP 2500E

RG-IDP 2500E

100-240 VAC, 47-63 Hz

2.2.6

RG-IDP 2500E

2.2.7 EMI

2.3

2.4

RG-IDP 2500E

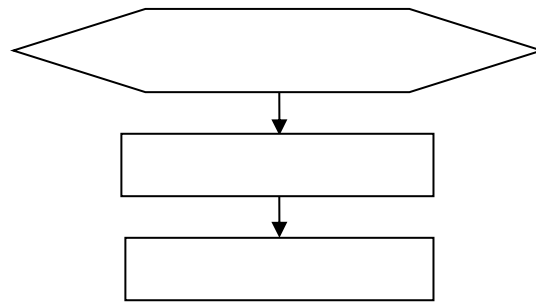
2.5

	2	USB	2	Console	8	4
		2 SFP				

3

RG-IDP 2500E

3.1



3.2

RG-IDP 2500E

3.3

5mm

1.5cm

- 1)
- 2)
- 3)
- 4)

IEC60297 19
1RU=44.45mm(1.75inch) 1RU 3-1

RU Rack Unit

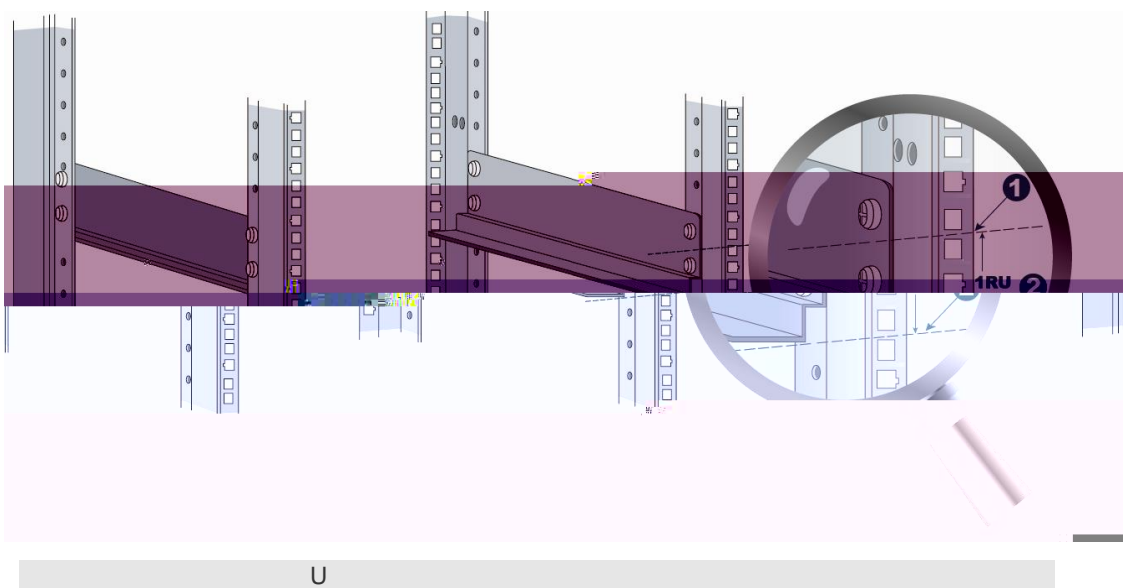
RG-

IDP 2500E

RU

U

3-1



10)

19)

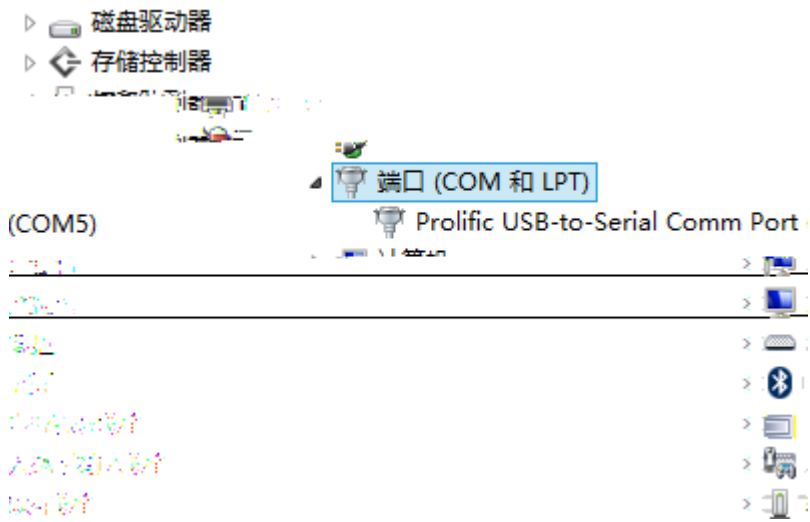
u

29)

31)

\$

¢

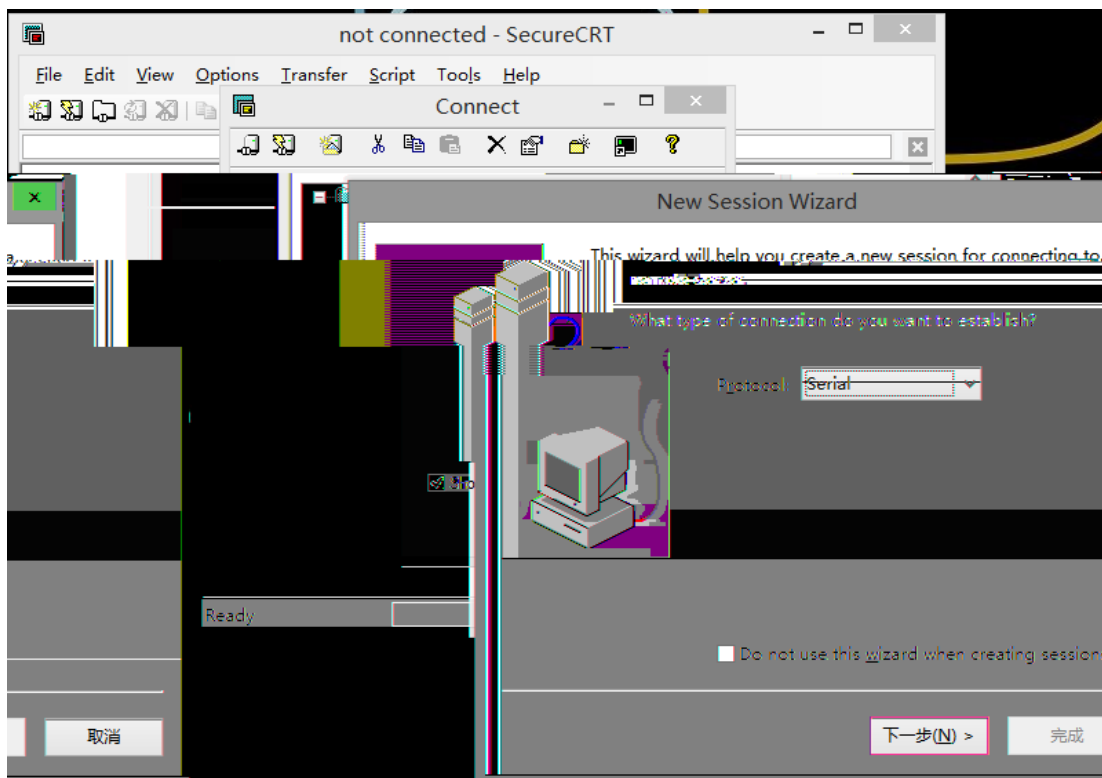


9600

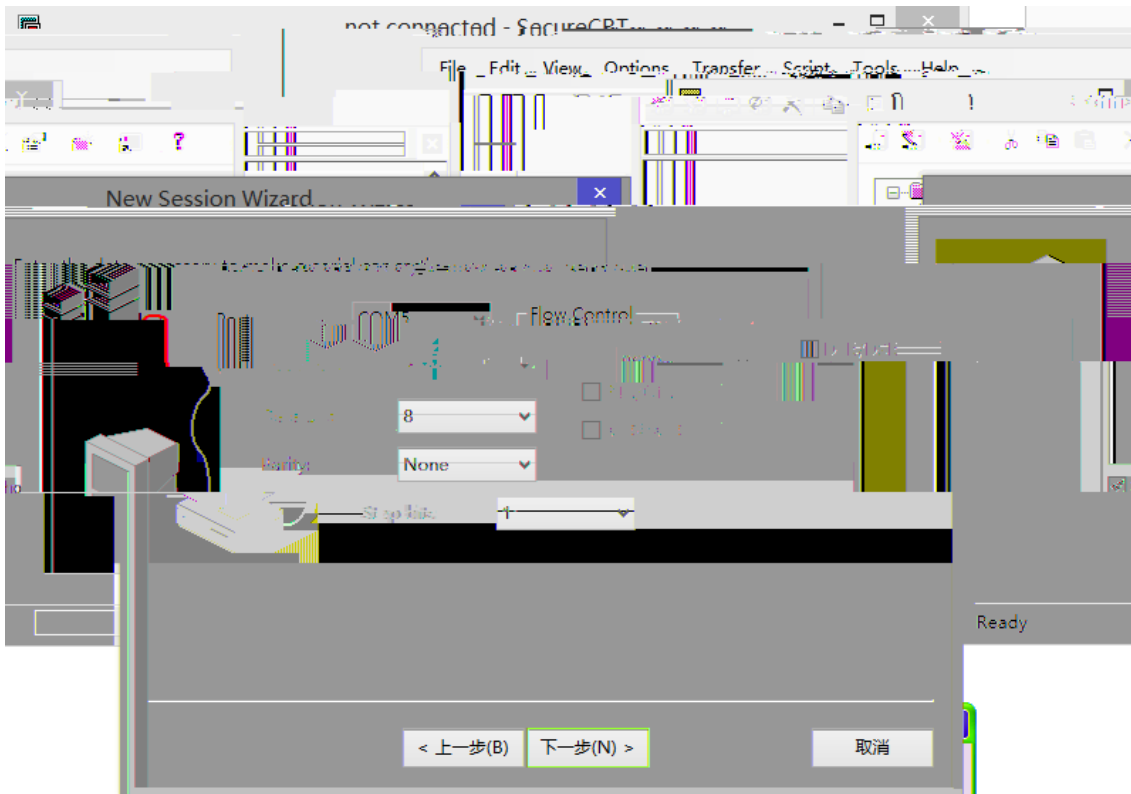
8

1

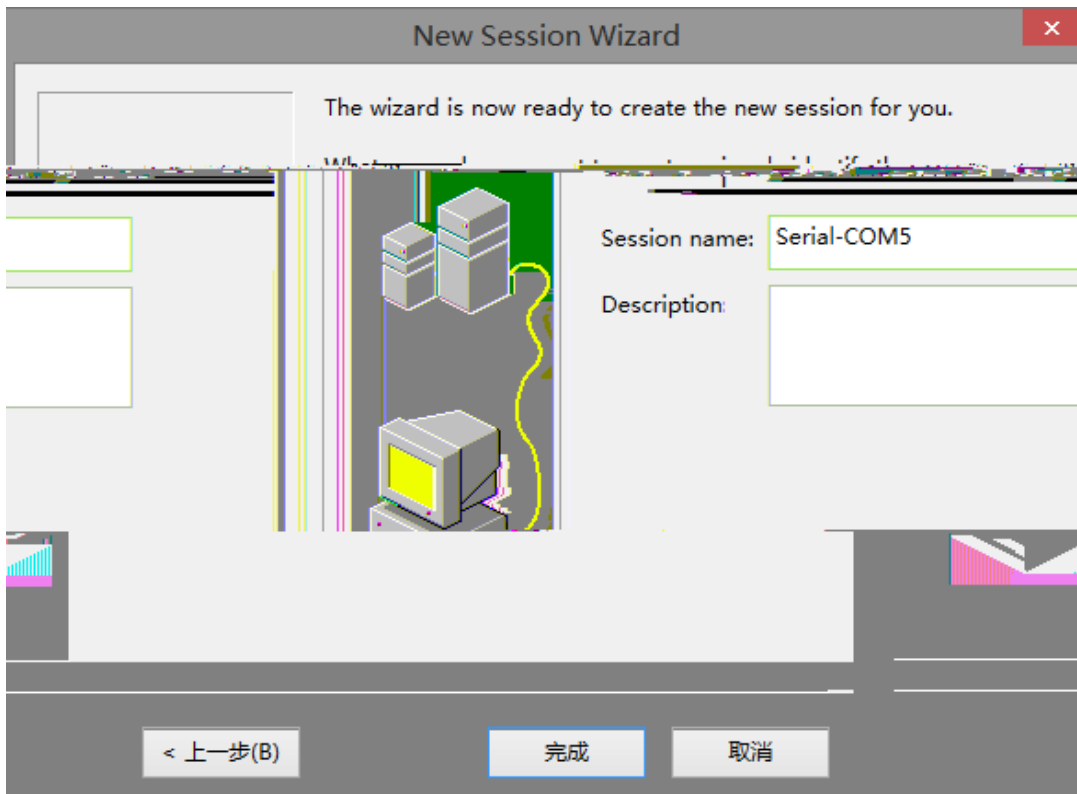
32)



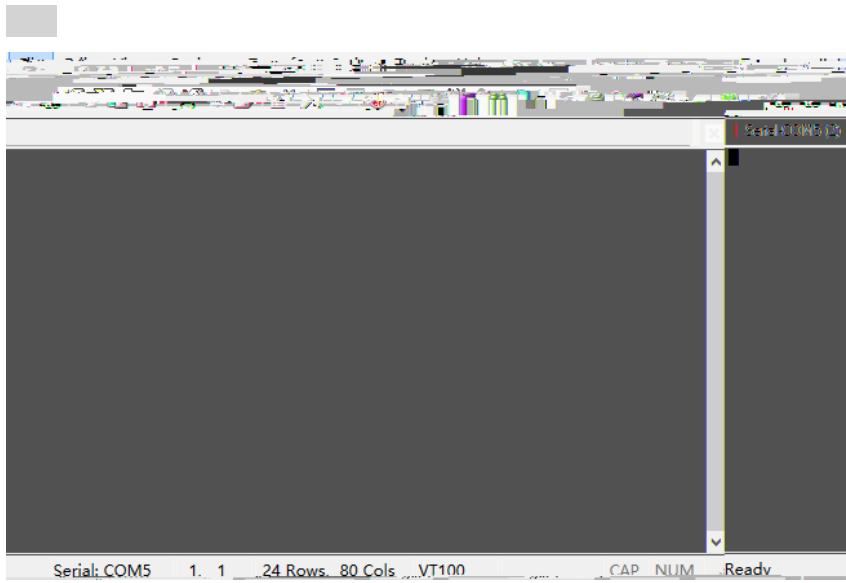
33)



4-9



4-10



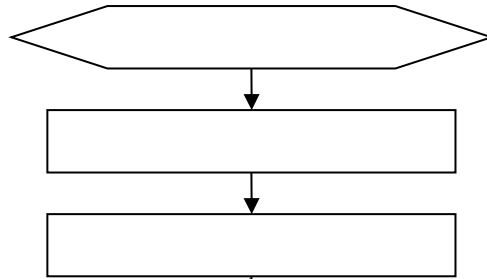
4-11

4.2

PC

6

6.1



6.2

Status

Power

link

1

2

3

4

1310nm

1550nm

A

1000BASE-T/100BASE-TX/10BASE-T

MDI/MDIX Crossover

UTP

1000BASE-T

IEEE 802.3ab

100-ohm 5

5

UTP

STP

100

1000BASE-T

A 4



B

RG-IDP 2500E

19

7

5

7

10

SFP+

5

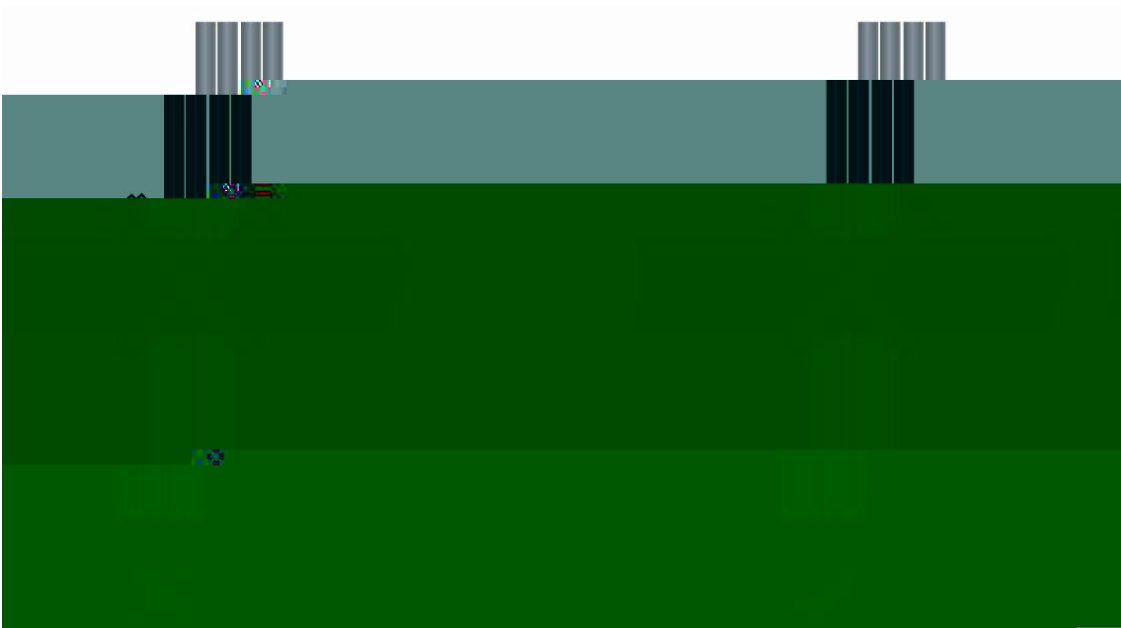
10

25

20

10

= :Ä



D-3

D-3



220V

-48V

D-4

D-4

mm	mm
10	80~150
10~30	150~200
30	200~300