



RG-S2300G-P v1.0

Firmware: Build 1.01.13

.....	5
.....	7
1.1	7
1.2 RG-S2300G-P	7
1.3 RG-S2300G-P	8
1.3.1 RG-S2312G-P	8
1.3.2 RG-S2320G-P	9
1.4 RG-S2300G-P	10
.....	12
2.1	12
2.1.1	12
2.1.2	12
2.1.3	12
2.1.4	12

4.2.1	23
4.2.2	23
	24
5.1	24
5.2	24
A	26
1000BASE-T/100BASE-TX/10BASE-T	26
	26
B	28
MINI-GBIC	
MINI-GBIC SFP	

V C B T 1 0 0 1 3 6 0 g [< 0 8 7 D > 7 c h e

1.3.2 RG-S2320G-P

1.3.2.1

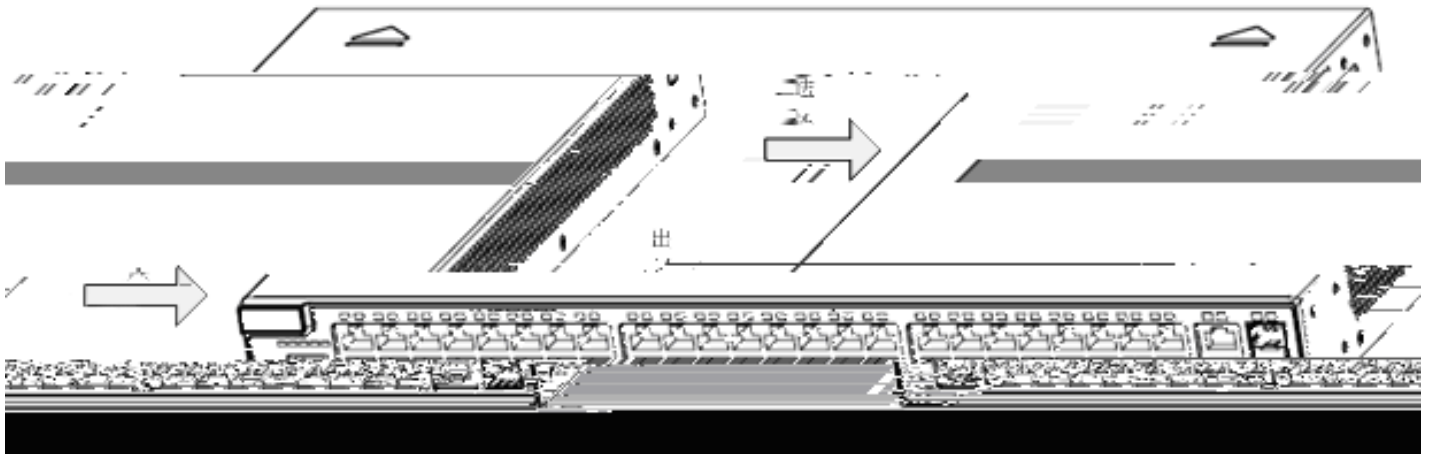
RG-S2320G-P	16	10/100Base-T	1	SFP	1
10/100/1000Base-T	1	Console			

3.5A
10A

1.3.2.5

RG-S2320G-P
10cm

1-7



1.4

1-4 RG-S2300G-P V1.0

Ä

2.1

RG-S2300G-P V1.0

注意:

2.1.1

2.1.2

2.1.3

警告:

- 1.
- 2.

2.1.4

- (1)
- (2)
- (3)

2.1.5

RG-S2300G-P V1.0

警告:

2.2

RG-S2300G-P V1.0

2.2.1

RG-S2300G-P V1.0

10cm

2.2.2

2-1 RG-S2300G-P V1.0

%

--	--

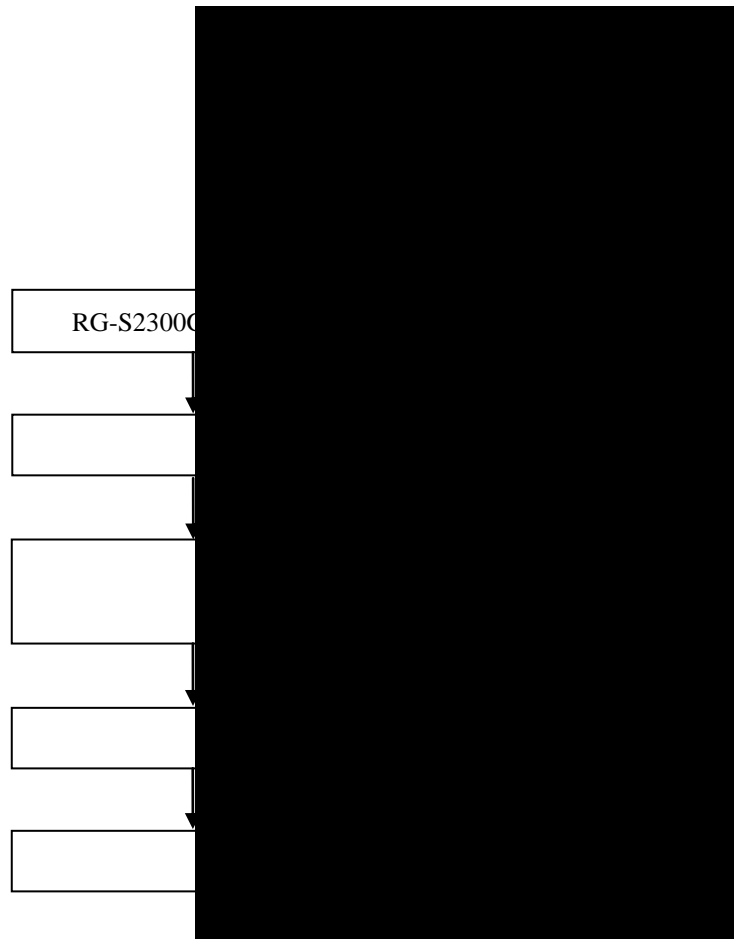
0℃-50℃

5%-95%

2.3

注意:

3.1



3.2

3.3

3.3.1

:

10

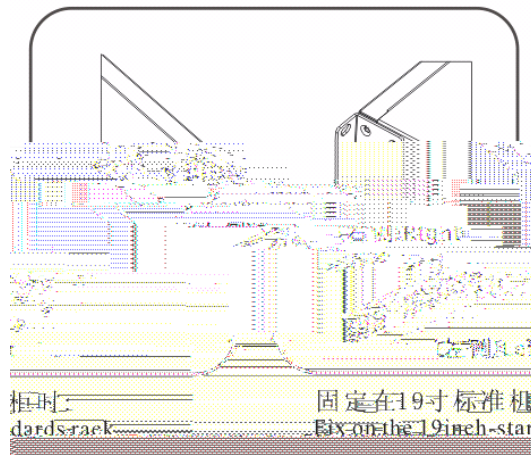
3.3.2

19

RG-S2300G-P

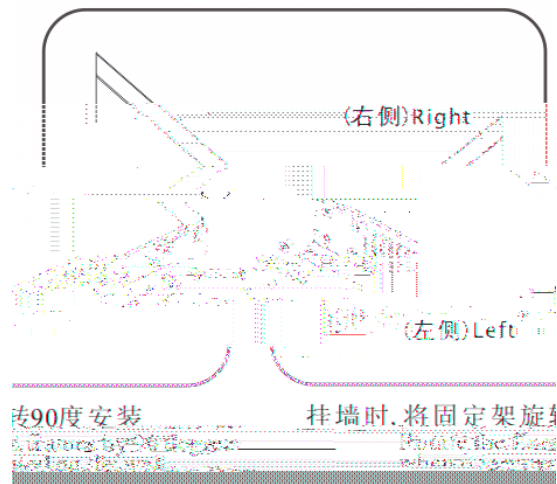
EIA

19



3.3.3

RG-S2300G-P



3.3.4

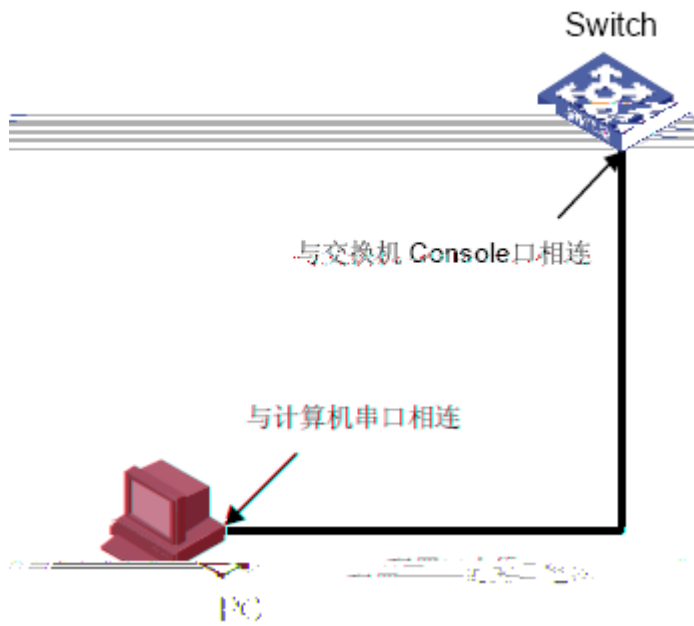
19

4

4.1

4.1.1

PC Console . 4-1 :

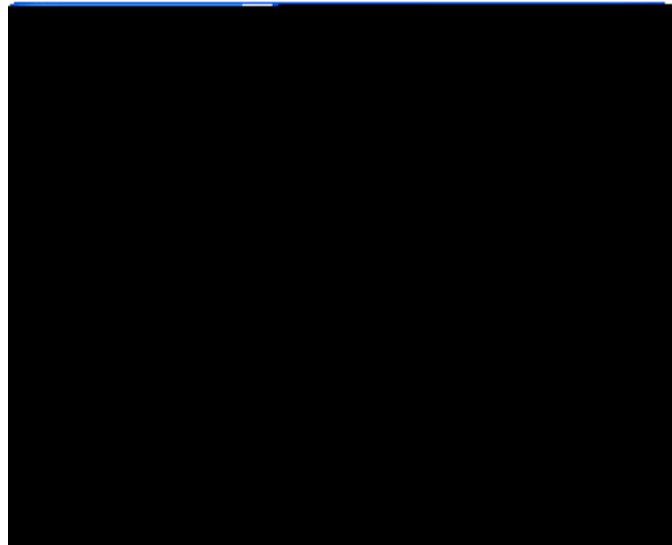


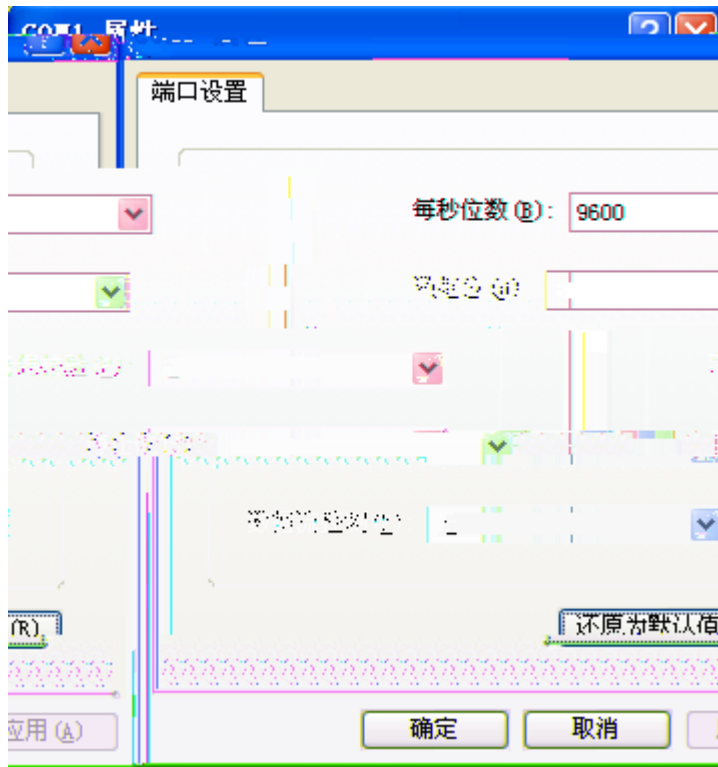
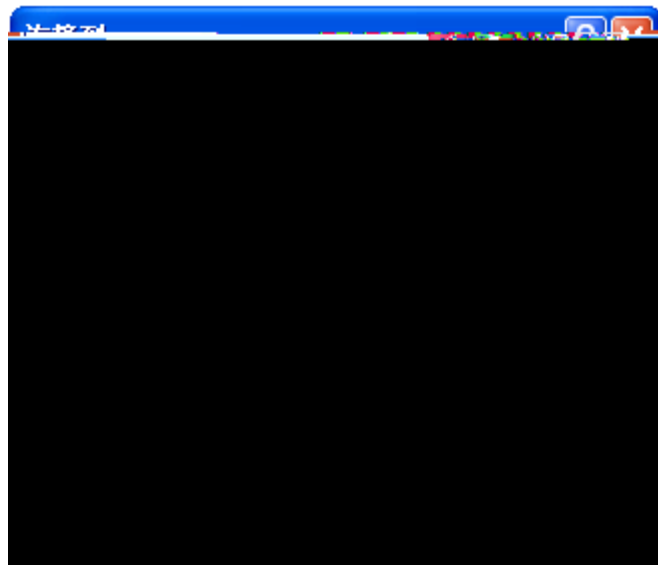
4-1

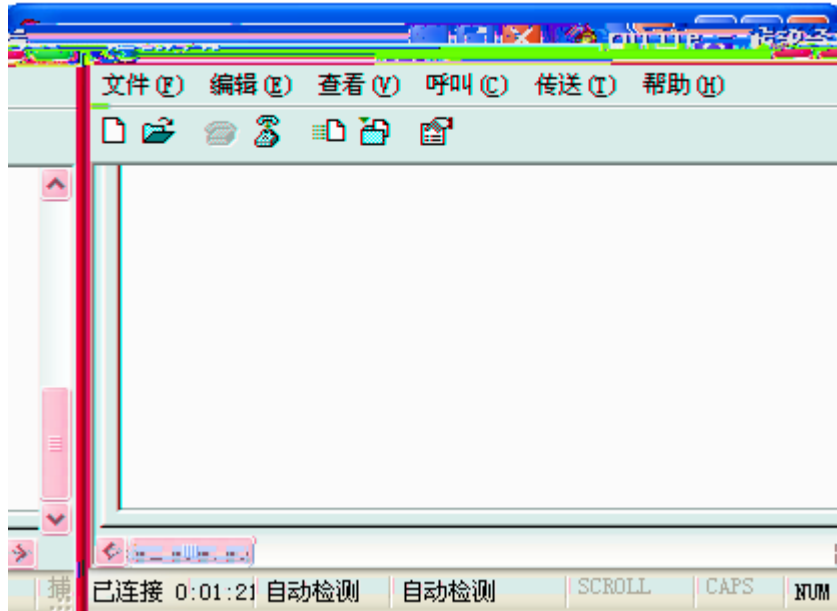
4.1.2

DB-9 PC
RJ-45 Console

4.1.3







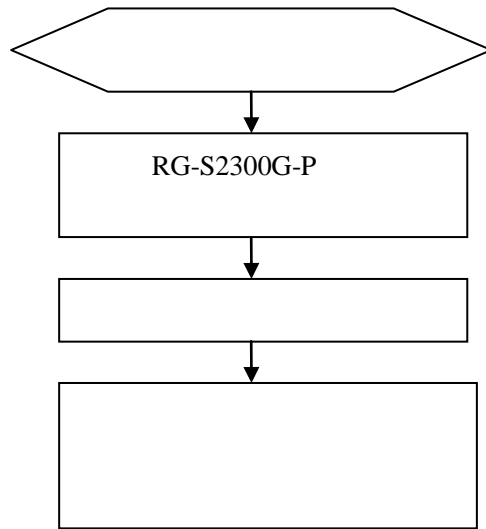
4.2

4.2.1

PC

4.2.2

5.1



5.2

status		

RJ45	100	

A

1000BASE-T/100BASE-TX/10BASE-T

1000BASE-T/100BASE-TX/10BASE-T						MDI/MDIX
Crossover	1000BASE-T	IEEE 802.3ab		100-ohm 5	5	UTP
	STP	STP	100	1000BASE-T	4	
	4	1000BASE-T		A-1		

A-1 1000BASE-

