

# RG-S5750-28GT-S

V1.25

2022-06-29

copyright © 2022



•

•

•

•

•

• 7\*24h

• 7\*24h

•

•

•



APP



\_\_\_\_\_

\_\_\_\_\_

\_\_\_\_\_

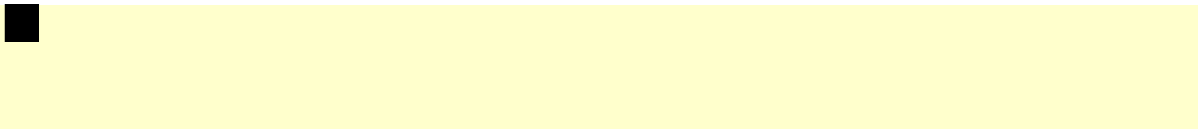
4008-111-000

\_\_\_\_\_

4008111000@ruijie.com.cn

doc@ruijie.com.cn

1.






2.

1

RG-S5750-28GT-S

" " " " " " " "

SFP	1000Base-X 1000Base-T 2.5G SFP  RG-S5750-28GT-S V2.00	SFP	100Base-FX
USB	1 A USB2.0		
	<ul style="list-style-type: none"> <li>■ AC 100-240V~ 90-264V~ 50-60Hz 0.6A</li> <li>■ HVDC NA 192-290V 0.2-0.12A</li> </ul>		
EEE	RG-S5750-28GT-S V1.00 RG-S5750-28GT-S V2.00		
POE			
	RG-S5750-28GT-S V1.00	<33W	
	RG-S5750-28GT-S V2.00	<27W	
	0°C 50°C		
	-40°C 70°C		
	10% 90% RH		
	5% 90% RH		
EMC	GB/T 9254.1-2021		
	GB 4943.1-2011		
x x	RG-S5750-28GT-S V1.00	440x200x43.6	
mm	RG-S5750-28GT-S V2.00	440x260x43.6	
kg	3.5 kg		



RG-S5750-28GT-S

- AC
  - 100-240V~
  - 90-264V~
  - 50-60Hz
  - 0.6A
  - 10A

- HVDC
- NA
- 192-290V
- 0.2-0.12A
- 10A

RG-S5750-28GT-S

10cm

## 2

### 2.1



RG-S5750-28GT-S



#### 2.1.1

- 
- 
- 
- 

#### 2.1.2

- 
- 
- 

#### 2.1.3

- - 
  - 
  - 
  - 
  -
- 
-



- 
- 
- 

RG-S5750-28GT-S

0°C-50°C	10%-90%



1.5m



0.4m

### 2.2.3

0.5μ m	/ m <sup>3</sup>	3.5× 10 <sup>6</sup>
5μ m	/ m <sup>3</sup>	3× 10 <sup>4</sup>

	(mg/m <sup>3</sup> )	(mg/m <sup>3</sup> )
SO <sub>2</sub>	0.3	1.0
H <sub>2</sub> S	0.1	0.5
NO <sub>2</sub>	0.5	1.0
Cl <sub>2</sub>	0.1	0.3



30

### 2.2.4

■ TN PE

■

■

■

## 2.2.5

RG-S5750-28GT-S

---

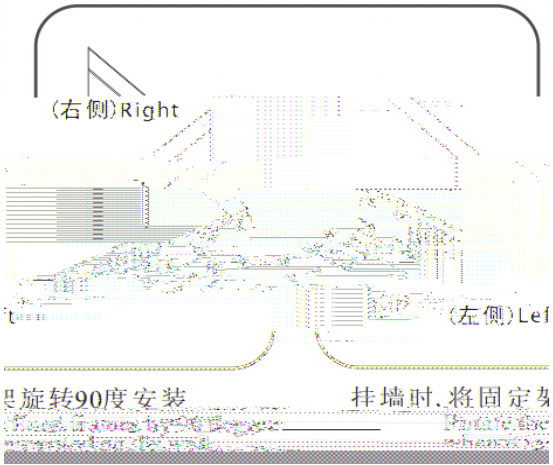
---



RG-S5750-28GT-S

### **3.3      RG-S5750-28GT-S**

-



### 3.4

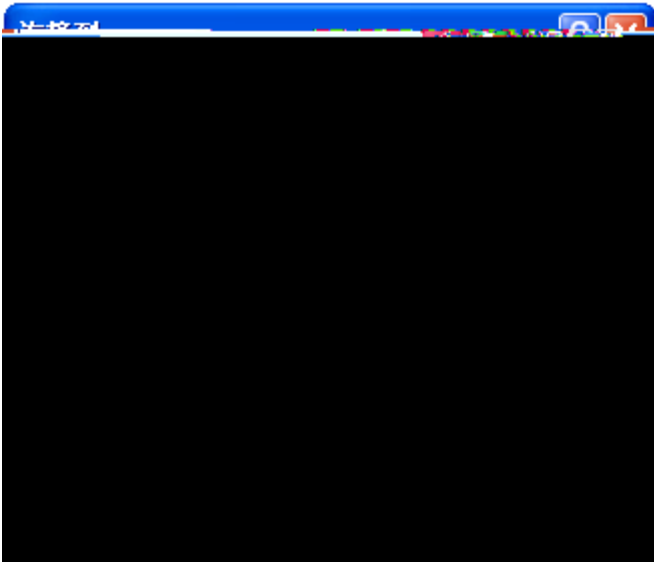
---

---

- 
- 
- 
- 
-







4)

< >

4-5

9600

8

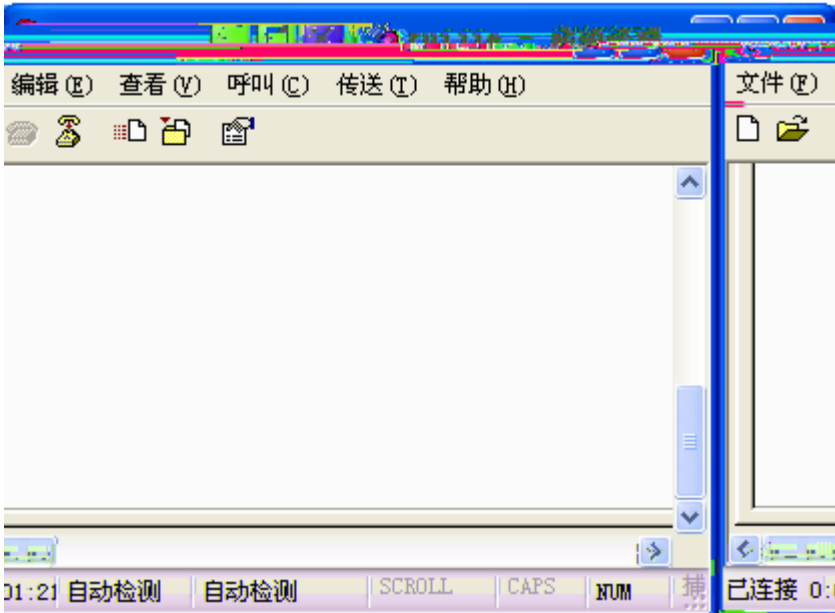
1

4-5



5)

< >



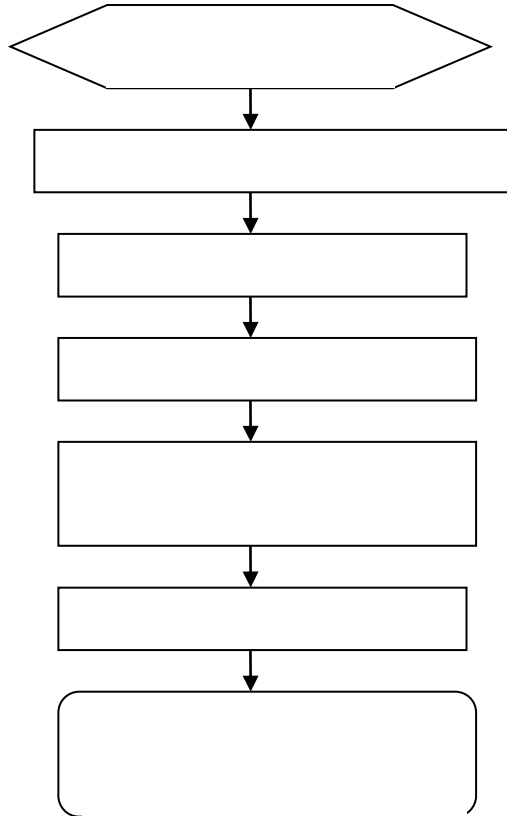
## 4.2

- 
- 
- 
- PC console

- 
- 
- 
-

# 5

## 5.1



## 5.2

status		
Status		

RJ45	100	



**Switch**

1 IRD +

2 IRD

**Adnter**

1 OTD +

**Switch**

1 IRD +

**Switch**

1OTD +

## B Mini-GBIC

SFP

SFP  
SFP

Mini-GBIC

**Mini-GBIC SFP**

Mini-GBIC( SFP )	( nm )	
------------------	--------	--

# C

