

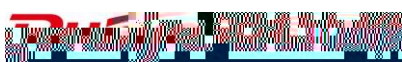


RG-WALL 1600-M5100

V1.4

©2013

1



Ruijie

RGOS®

RGNOS®

7× 24

<http://www.ruijie.com.cn/>

<http://webchat.ruijie.com.cn>

<http://www.ruijie.com.cn/service.aspx>

4008-111-000

<http://support.ruijie.com.cn>

service@ruijie.com.cn

1

RG-WALL 1600-M5100

IPSec SSL VPN Web
IPv4 IPv6 NAC SSL

RG-WALL 1600-M5100

RG-WALL 1600-M5100

1.1 RG-WALL 1600-M5100

	RG-WALL 1600-M5100

1-1 RG-WALL 1600-M5100

RG-WALL 1600-M5100

1-2

1~7

1-2 RG-WALL 1600-M5100

#			
1	USB MGMT	USB-B	USB
2	MGMT	RJ-45	PC MGMT 1 Web UI

2

2.1

RG-WALL 1600-M5100

2.1.1

2.1.2

2.1.3

RG-WALL 1600-M5100

1~10

" 3.8

"
2.1.5

RG-WALL 1600-M5100

2.2.3

RG-WALL 1600-M5100

RG-WALL 1600-M5100

0°C-40°C	20%-90%

1.5M

0.4M

2.2.4

2.2.7 EMI

2.3

2.4

RG-WALL 1600-M5100

2.5

	2	USB	2	Console	8	4
		2 SFP				

3.3

5mm

1.5cm

- 1)
- 2)
- 3)
- 4)

1RU=44.45mm(1.75inch) IEC60297 19 1RU 3-1

RU Rack Unit

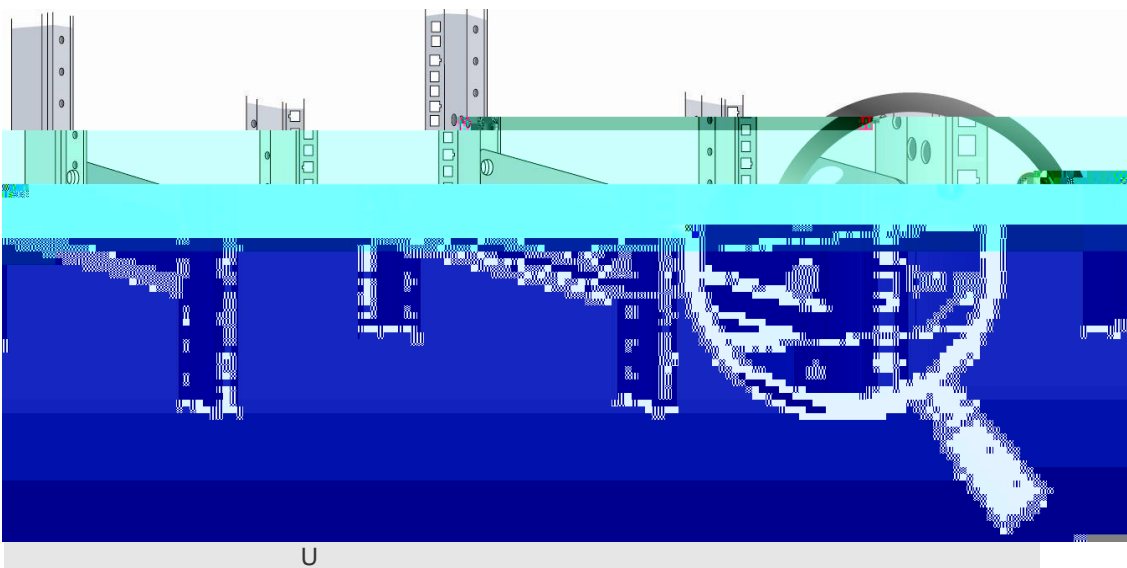
WALL 1600-M5100

RU

U

RG-

3-1



3.4

RG-WALL 1600-M5100

10mm

- 1) RG-WALL 1600-M5100
- 2) RG-WALL 1600-M5100
- 3) RG-WALL 1600-M5100 RG-WALL 1600-M5100

3.5

16A

- 1)
- 2)

3

1.5

14AWG

3.6

- 1.
- 2. SFP
- 3. SFP
SFP

3-7

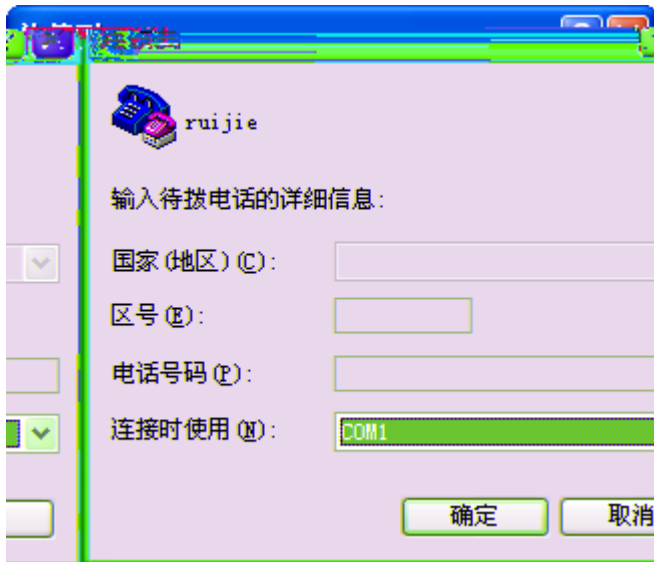
- 4.
 - 5.
-
-
-



< >

4-4

4-3



< >

4-5

8

1

9600

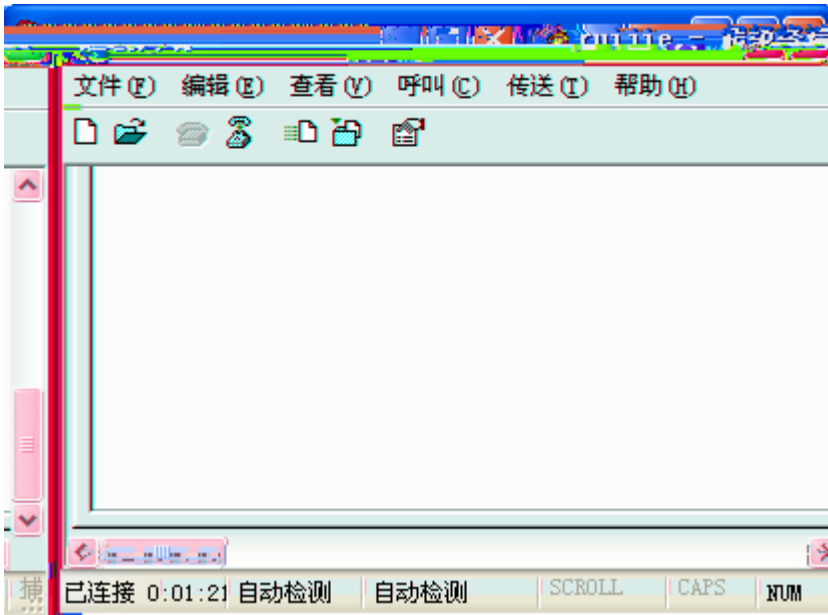
4-4



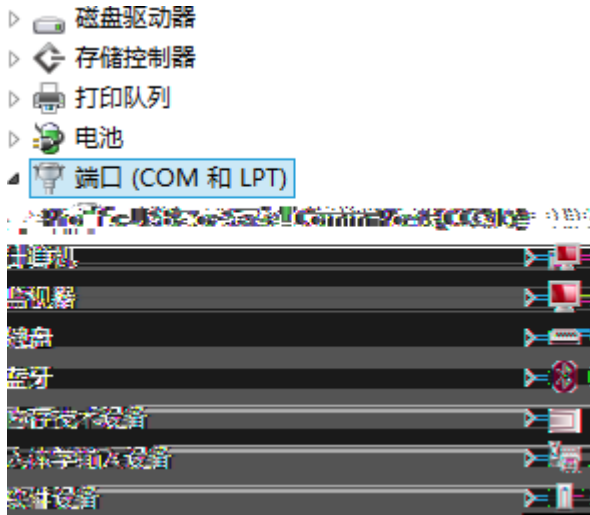
3)

< >

4-6



PC	Console							Console
USB	PC		SecureCRT					
USB	Console	USB	Console			Console	USB	PC
	PC	%	+	"	"	"	"	COM LPT COM
	4-7							



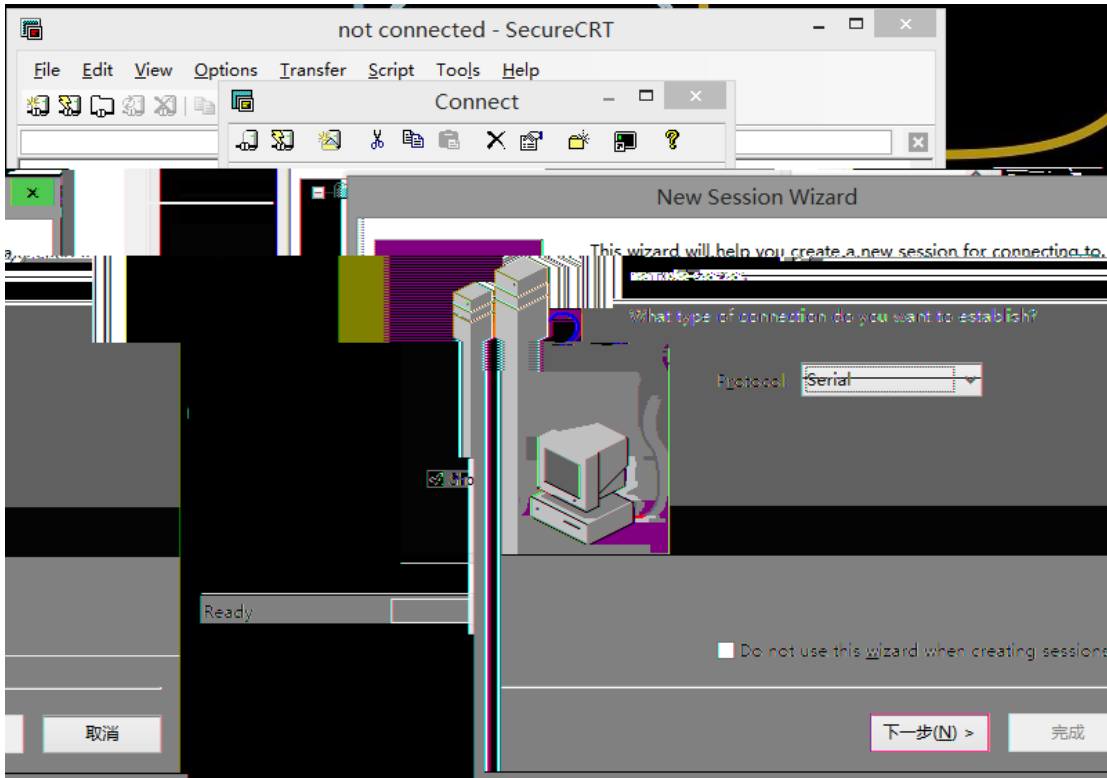
9600

8

1

1) %^+%[]^&+ Connect
%!\!+ 4-8

-%^, ^!+}+



4-8

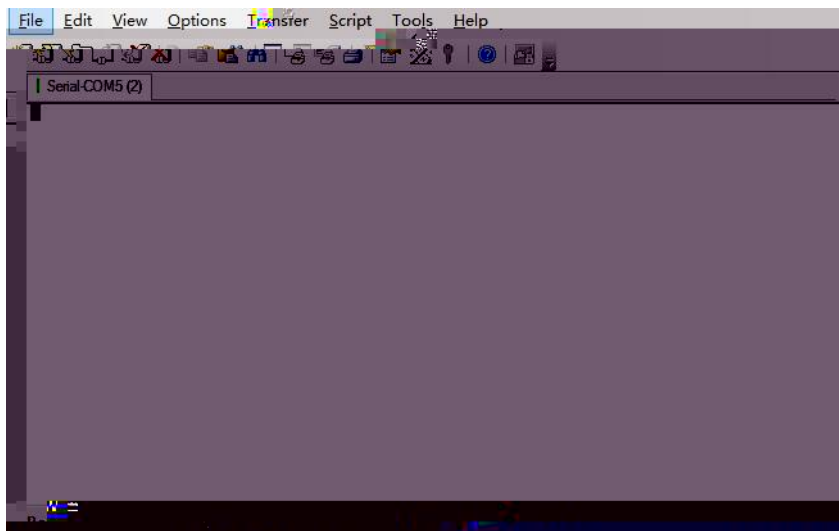
2) %o +! 4-9

4-10

4)

< >

4-11



4-11

4.2

PC

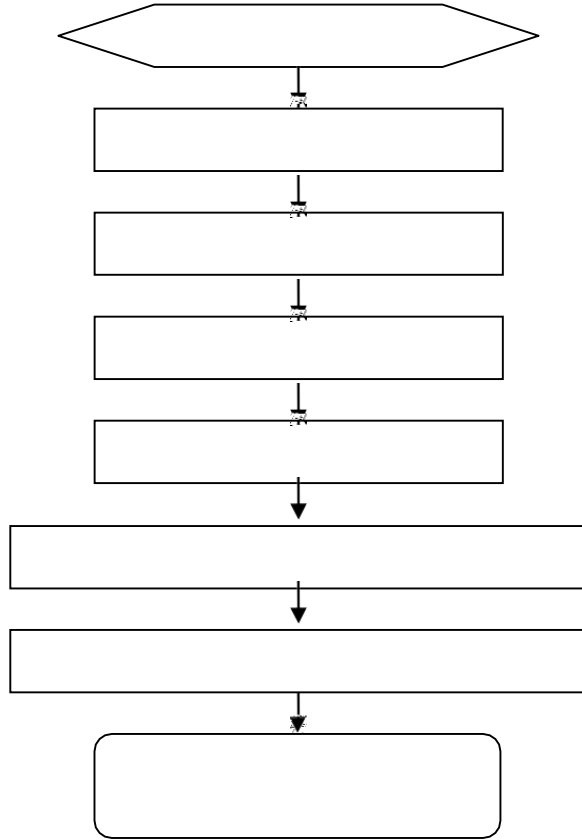
5

5.1

RG-WALL 1600-M5100

6

6.1



6.2

1

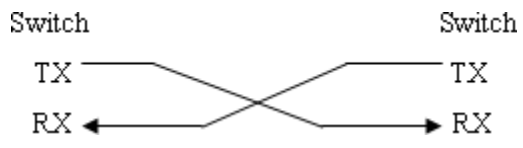
2

Status

Power

A

A 4

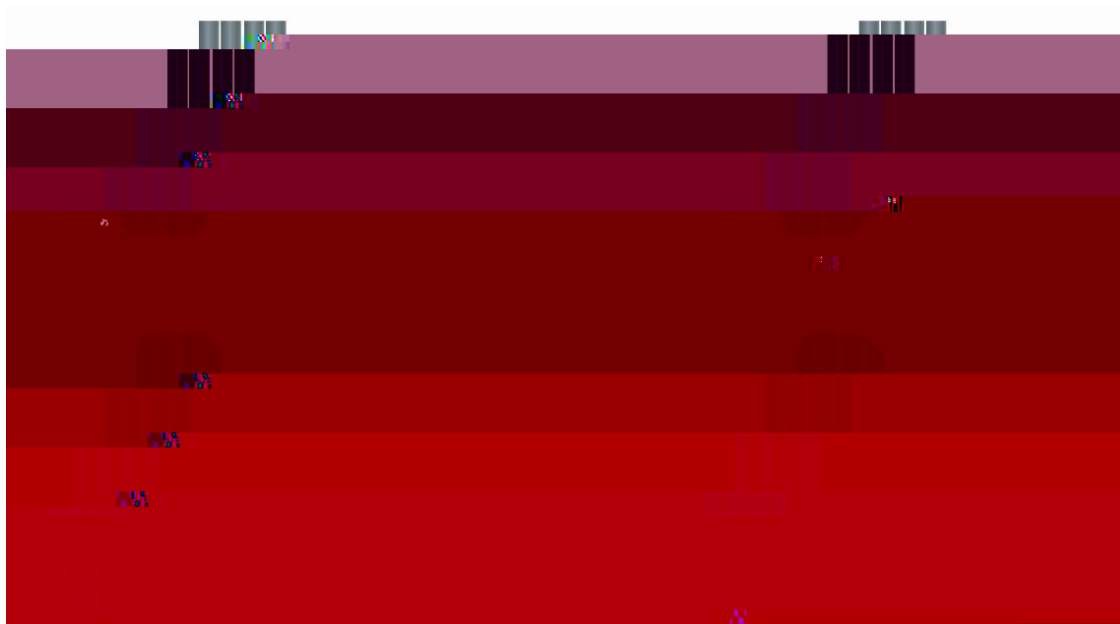


B

RG-WALL 1600-M5100

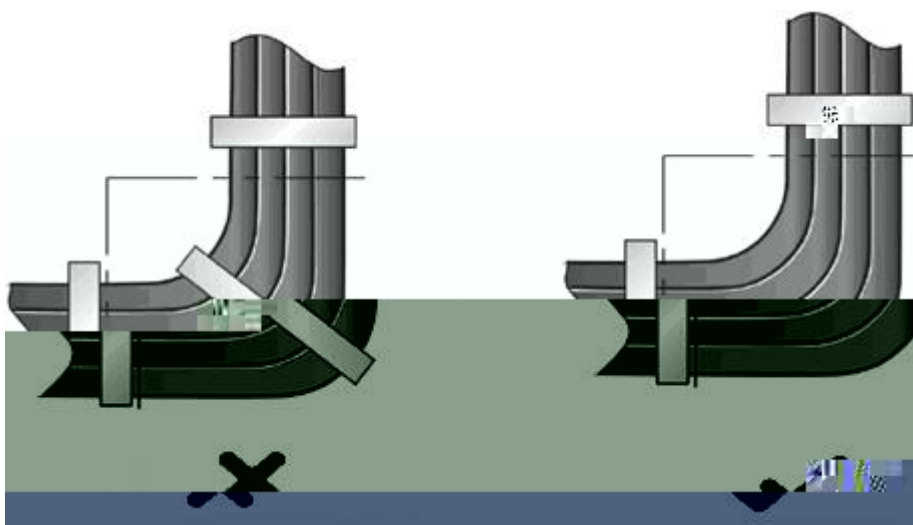
19

D-2



D-3

D-3



220V

-48V

D-4

D-4

