

# RG-RSR10-01G-TD-LTE

copyright © 2022



- 
- 
- 
  
- 
- 
- 
- 
- 
- 
- 

<http://www.ruijie.com.cn>

<http://www.ruijie.com.cn/fw/>

7\*24h

~~<http://www.ruijie.com.cn>~~

7\*24h

4008-111-000

--

<http://www.ruijie.com.cn/special/fw/tool/xryf/>



/

---

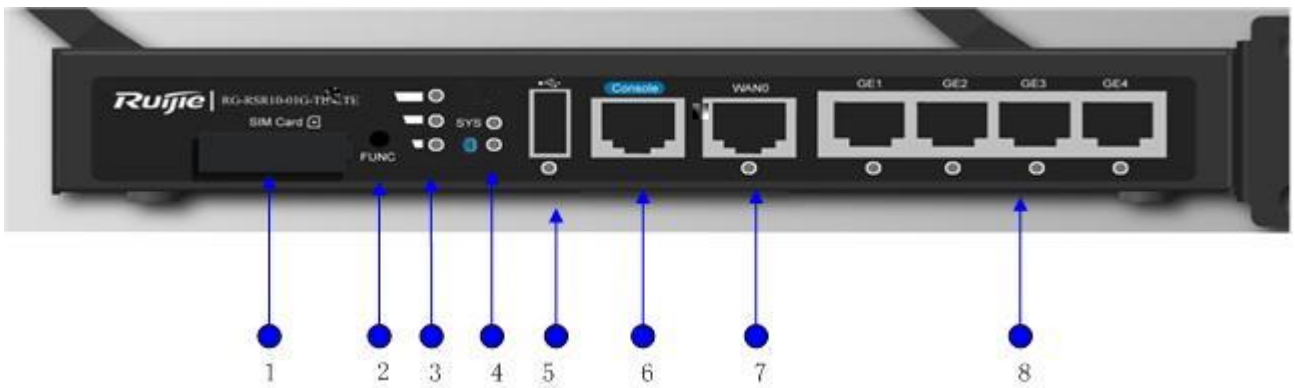
**2.**



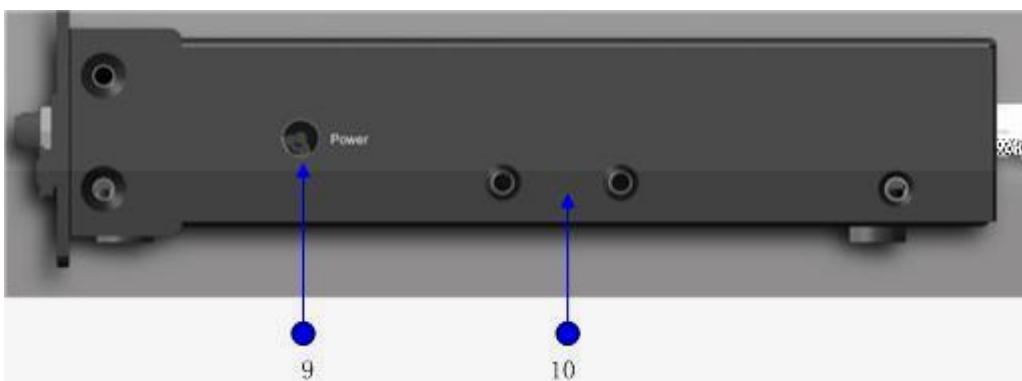
■

### 1.1.3 RSR10-01G-TD-LTE

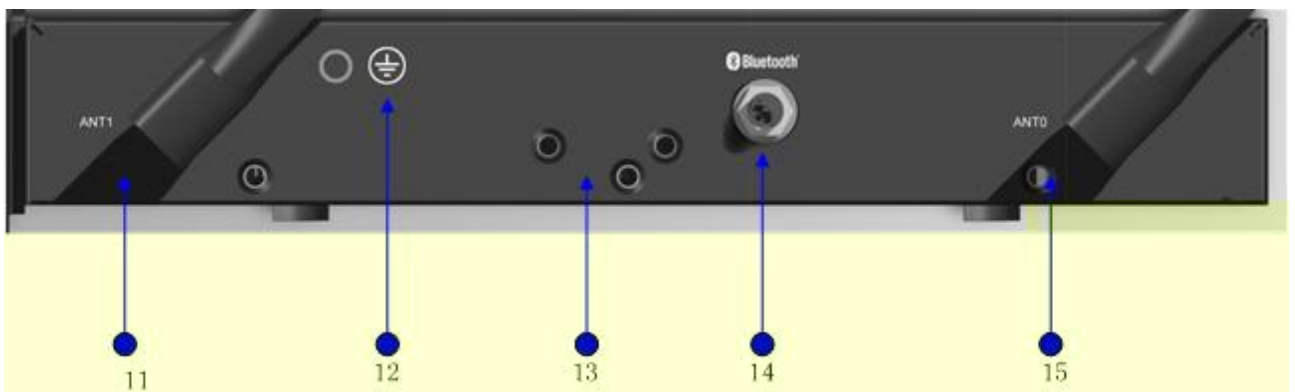
RSR10-01G-TD-LTE



RSR10-01G-TD-LTE



RSR10-01G-TD-LTE



1	SIM	2	FUNC
3	RSSI	4	SYS/
5	USB USB	6	Console
7	GE WAN	8	GE LAN 1 4
9		10	
11	4G ANT1	12	
13		14	
15	4G ANT0		

RSR820-T

SYS	
bluetooth	
USB USB	USB USB
RSSI 4G	4G 4G  1 2 3
GE	link  link

**1.1.4 RSR10-01G-TD-LTE**

RSR10-01G-TD-LTE

	RSR10-01G-TD-LTE
	1 WAN 4 LAN 1 console RJ45 1 USB 4G TD-LTE
	RISC
DDR3 RAM	512MB
Boot Rom	8MB



### 1.2.1

- RSR10-01G-TD-LTE
- RJ45 ARP 802.1Q
- X.25 HDLC PPP SLIP
- TCP/IP IP ICMP IGMP TCP UDP
- IP RIP V1/V2 OSPF V1/V2
- SNMP
- TELNET TELNET
- DHCP Server DHCP Client DHCP Relay TFTP
- VRRP
- PPPOE
- DNS DDNS
- X-MODEM
- NAT ACL AAA
- IPSEC L2TP PPTP

### 1.2.2

### 1.2.3

- 
- 

### 1.2.4

- DEBUG
- 
- SNMP
-

- Console
- TELNET
- 

## 1.2.5

- IP
- AAA RADIUS
- PPP PAP CHAP callback
- 
- OSPF RIP V2
- NAT
- IPSEC/IKE
- GRE
- VLAN

## 1.2.6

- X-MODEM ( Windows XP Windows NT UNIX DOS )  
Console
- TFTP
- BOOTROM
- U



RSR10-01G-TD-LTE

- -10

- 
- 
- 
- 

### 2.2.4

- 
- 
- 
- 

### 2.2.5

- 
- 
- 

### 2.2.6

/



18

24

---

### 2.2.7

- /
- 
-

## 2.3

- 
- 
- 
- 
- 
- 
- 
- 
- 
- 
- 



RSR10-01G-TD-LTE

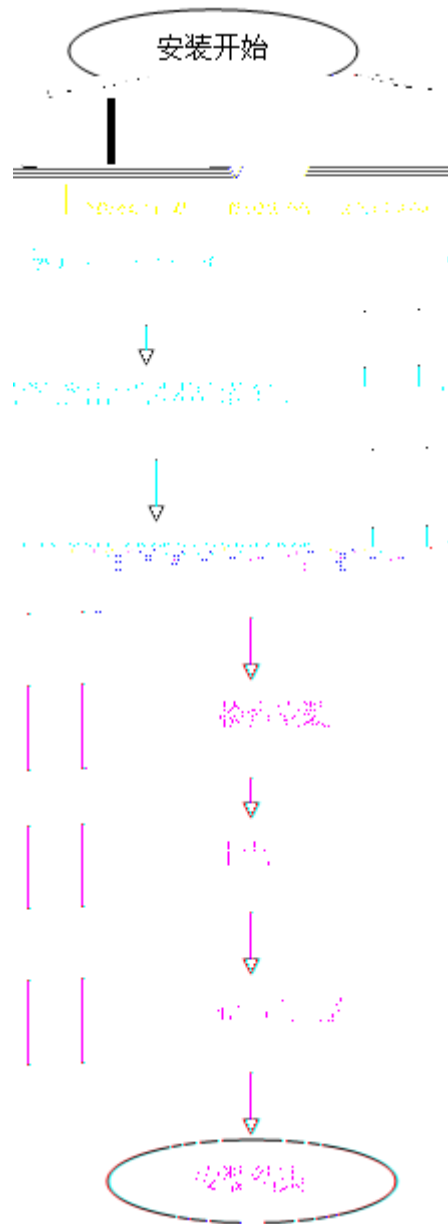
---

- HUB
- 
- 

PC

### 3

#### 3.1



#### 3.2

■

- 
- 
- 

### 3.2.1

30mm

2



### 3.2.2

RSR10-01G-TD-LTE

30mm

2



### 3.2.3

19

RSR10-01G-TD-LTE



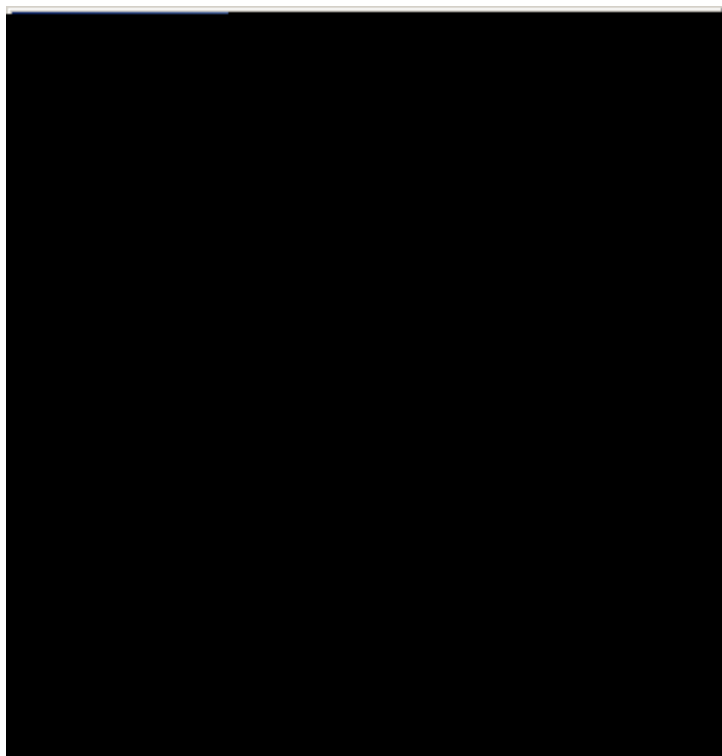
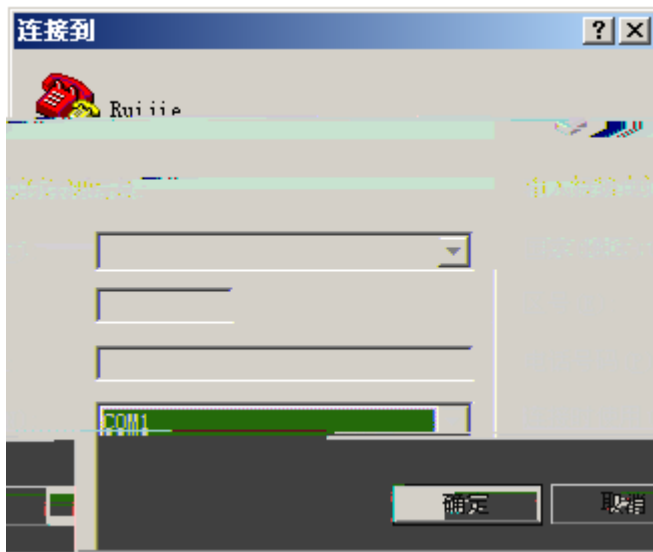
### 3.2.4

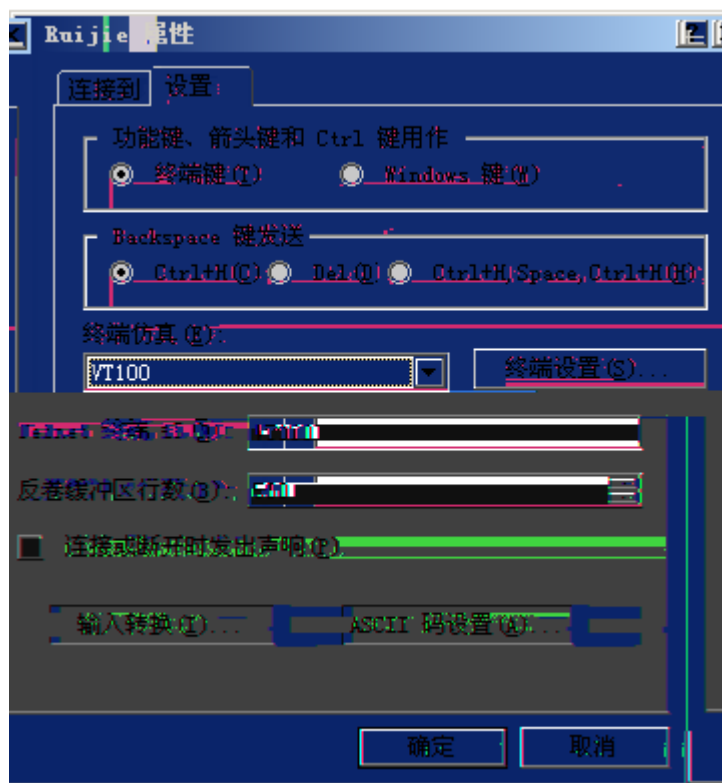
- 
- 
- 

10cm

## **3.3 4G**







## 4.1.2

### 4.1.2.1

- 
- 
-



Copyright (c) 1998-2013s by Ruijie Networks.

All Rights Reserved.

Neither Decompiling Nor Reverse Engineering Shall Be Allowed.

\*Jan 1 00:54:20: %MTD\_DRIVER-5-MTD\_NAND\_FOUND: 1 NAND chips(chip size : 134217728) detected

\*Jan 1 00:54:38: %DEVICE-5-CHANGED: Device RSR820-T (1) changed state to up.

\*Jan 1 00:54:38: %USB-5-MODEM\_FOUND: Modem <MC509> bind with tty 1.

\*Jan 1 00:55:24: %SYS-5-WARMSTART: System coldstart.



## 4.2

# 5

## 5.1

RSR10-01G-TD-LTE

SYS

- 
- 
- 
-

