

RG-AP3220

V1.02

copyright © 2018



<http://www.ruijie.com.cn/>

<http://webchat.ruijie.com.cn>

<http://www.ruijie.com.cn/service.aspx>

7 24

4008-111-000

<http://bbs.ruijie.com.cn/portal.php>

1

RG-AP3220

AP3220

AP(Fit AP)

/

AP(Fat AP)

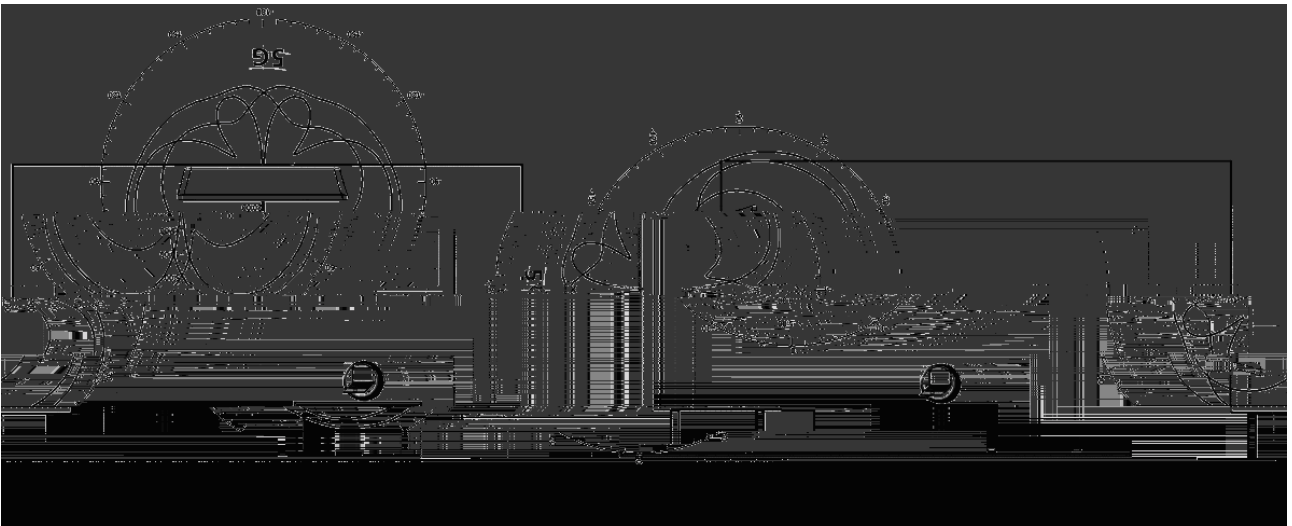
1.1 RG-AP3220

	RG-AP3220
	1 10/100/1000Base-T PoE
	1 console
	MIMO (2.4G 5G)
	802.11b/g/n 2.4G ~ 2.4835GHz 802.11a/n 5.15G ~ 5.85GHz (
	802.11b: BPSK, QPSK, CCK 802.11a/g/n: BPSK, QPSK, 16-QAM, 64-QAM
	2.4G 802.11b/g/n 20dBm 5G 802.11a/n 20dBm
	1dBm
	11b -99dBm(1Mbps) -90dBm(5.5Mbps) -87dBm(11Mbps) 11g -93dBm 6Mbps -88dBm 24Mbps -86dBm 36Mbps -77dBm 54Mbps 11a -92dBm 6Mbps -87dBm 24Mbps -84dBm 36Mbps -75dBm 54Mbps 11na -94dBm@MCS0 -72dBm@MCS7 -93dBm@MCS8 -72dBm@MCS15 11ng -94Bm@MCS0 -74dBm@MCS7 -93dBm@MCS8 -73dBm@MCS15
	-10 ~ 55 C -40 ~ 70 C 5% ~ 95% RH 5% ~ 95% RH IP41
	DC 48V PoE 802.3af/802.3at
	EN300 328 EN301 893
EMC	GB9254 GB17618 EN301 489-1 EN301 489-17 EN55022 EN55024
	GB4943 EN/IEC 60950-1
Health	EN 62311
	0.7 kg +

× × mm	205 × 205×42



5G RG-AP3220
1-4 5G 5G



2

) %

RG-AP3220

2.2

AP

500m



2.3

2.4

AP



2.5

RG-AP3220

2.5.1

RG-AP3220

RG-AP3220

2.5.2

RG-AP3220

2.5.3

RG-AP3220

RG-AP3220

-10 C-55 C	5%-95%

2.5.4

(m)	0.5	1	3	5
/	1.4×10^7	7×10^5	2.4×10^5	1.3×10^5

	mg/m ³	mg/m ³
SO ₂	0.2	1.5

H ₂ S	0.006	0.03
NO ₂	0.04	0.15
NH ₃	0.05	0.15
Cl ₂	0.01	0.3

2.5.5

DC36-57V

POE

802.3af/802.3at

POE

RG-AP3220

12.95W



POE

2.5.6 EMI

2.6

RG-AP3220

2.7

--	--

3

RG-AP3220 AP

3.1

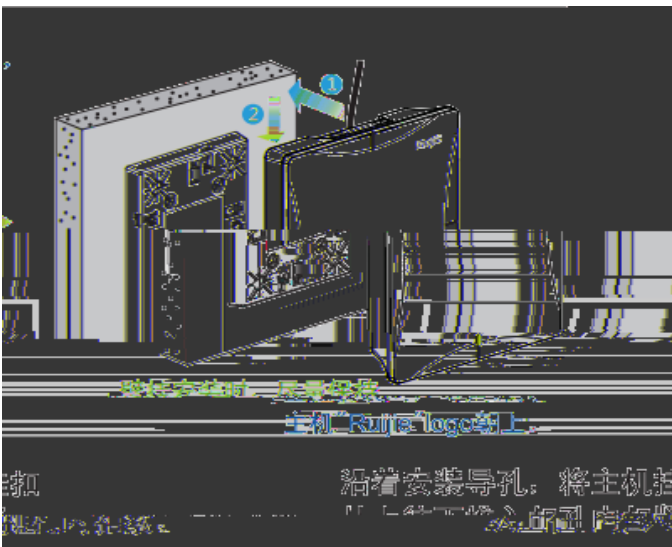




3-5



3-6



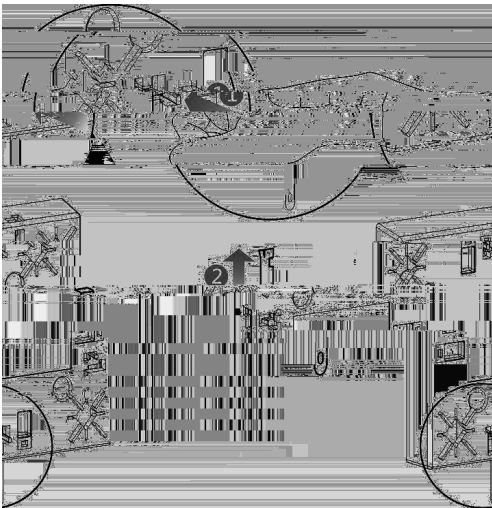
Ruijie logo



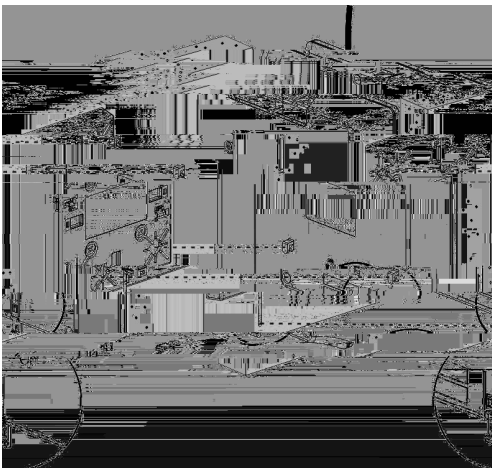


3.5

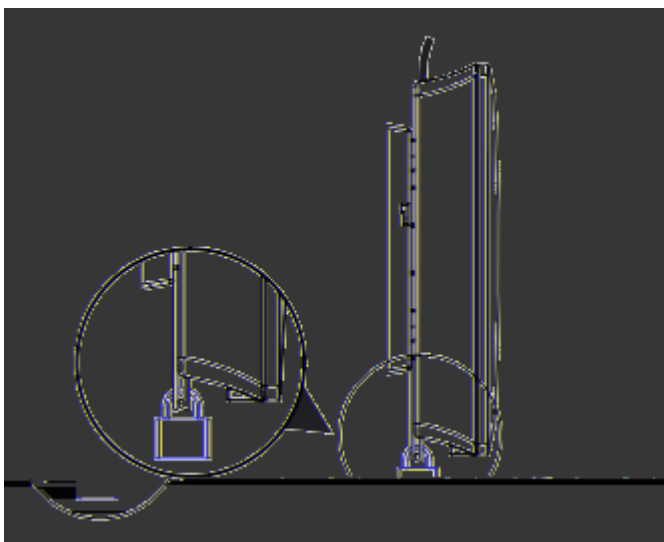
3-1



3-2

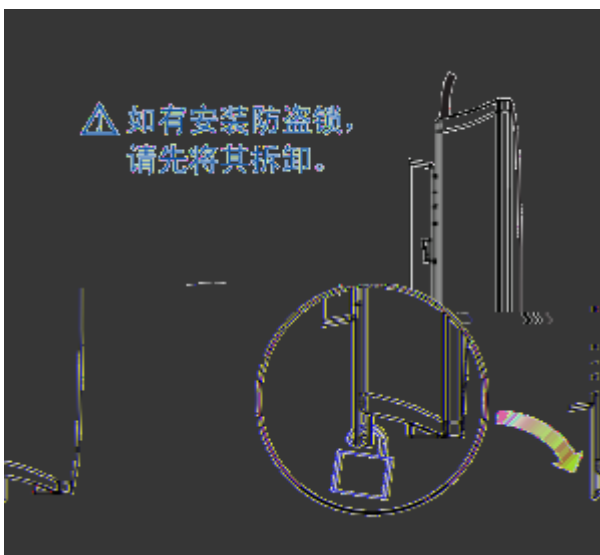


3-3

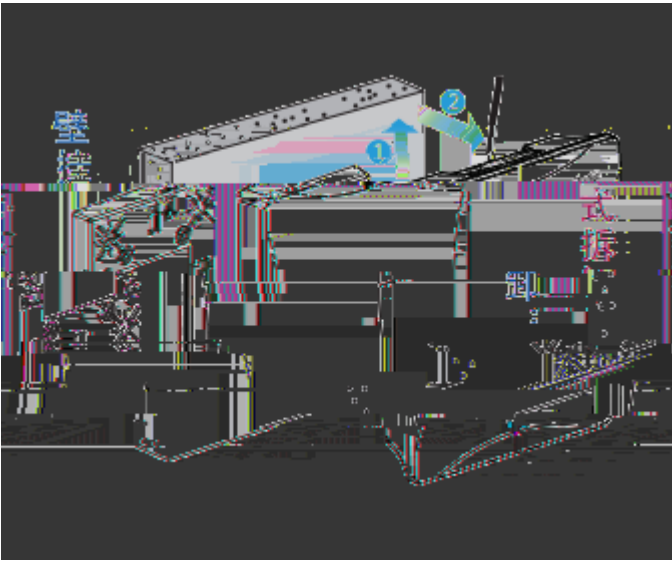


3.6

3-4



3-5



3-6



3.7

	AP	LAN/POE	AP	A	
⚡ console		9600	8	1	AP
⚡					
⚡ RG-AP3220				RG-AP3220	

3.8

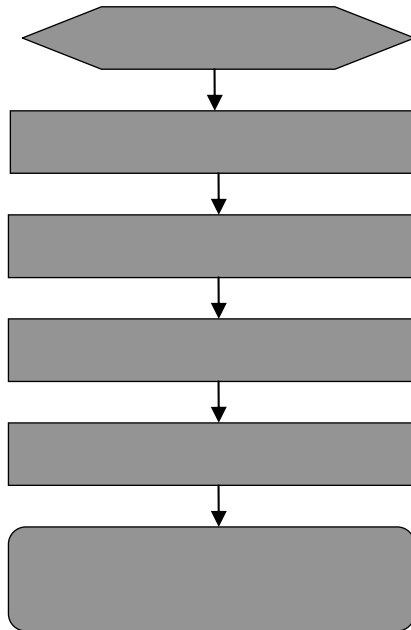
LAN/POE

3.9

AP

6

6.1



6.2

PoE

POE

802.11af

AP

AP

AP

,

1

,

,

1

3

CAPWAP

AC

AP

AC

A

1000BASE-T/100BASE-TX/10BASE-T

1000BASE-T/100BASE-TX/10BASE-T

Switch	Switch	Switch	Switch
1 IRD +	1 OTD +	1 IRD +	1 IRD +
2 IRD -	2 OTD -	2 IRD -	2 IRD -
3 OTD +	3 IRD +	3 OTD +	3 OTD +
6 OTD -	6 IRD -	6 OTD -	6 OTD +

RG-AP3220

	7	5	
		7	10
SFP+		5	10

D-

,+4\$A(0G6sI0aVc4C18+4D7FE

D-2

